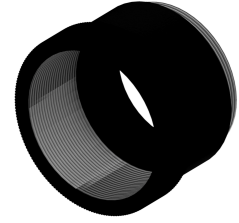

Optics accessories - Thread adapter M42x1-M42x1-L29

Short description: Adapter for mounting of lenses with M42x1 mount on cameras with M42x1 BFL 16 mm

Order number: 5-00-014



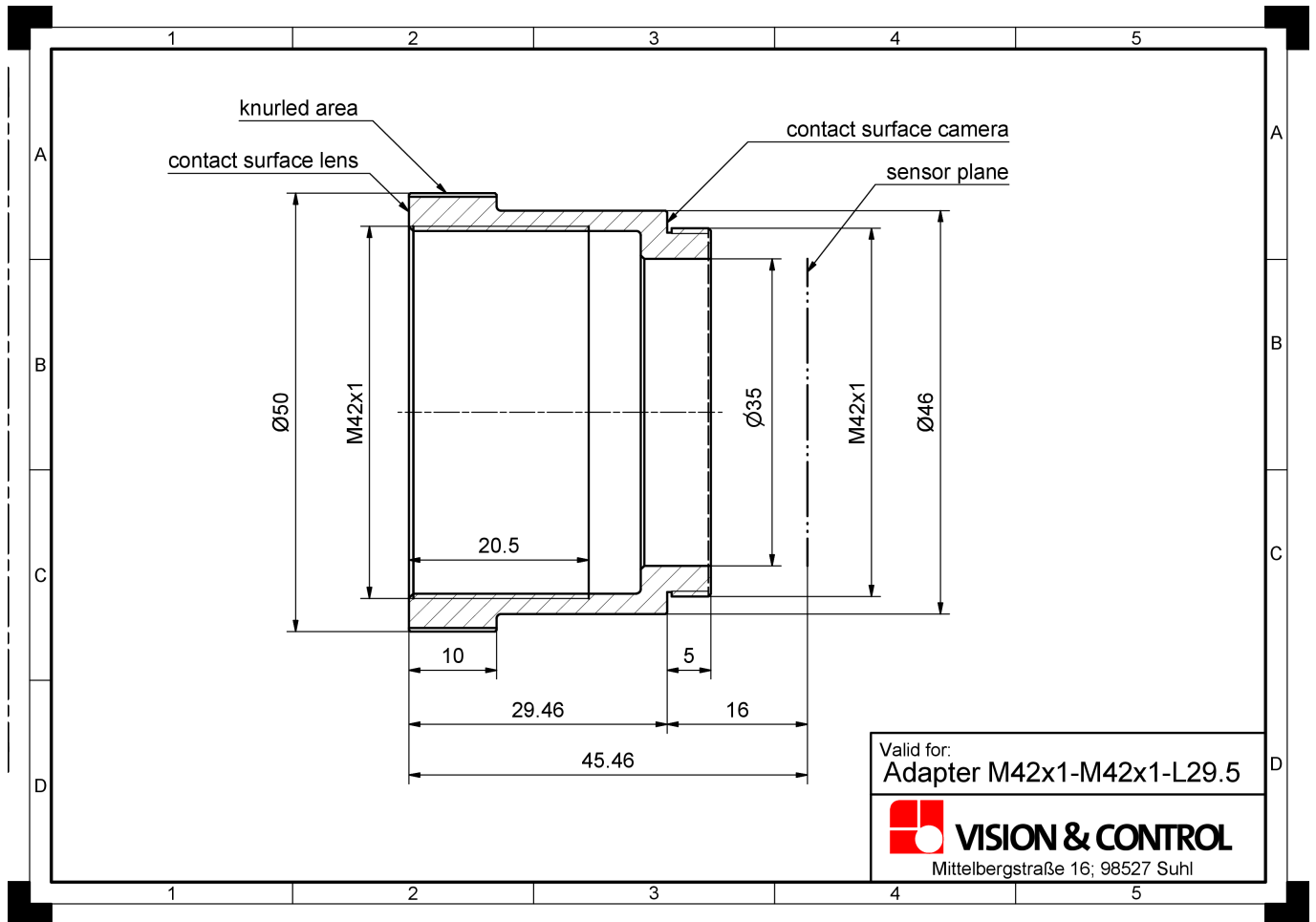
Characteristics

- Thread adapter for adjusting the flange focal distance or connection thread
 - light and robust aluminium holder with high dimensional stability
 - reduces the flange focal length from 45.46 mm to 16 mm
-

Technical data

Material (Housing)	Aluminum, matte black (anti-reflective)
Dimensions	
Outer diameter	50 mm
Inner diameter	35 mm
Thickness	29.46 mm
Internal thread	M42 x 1
External thread	M42 x 1
Change in optical path length	16 mm
Mounting	Screw adapter

Drawings



Dimensional drawing in mm