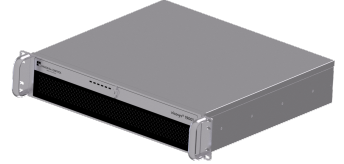

Multi-Camera Systems - vicosys 19001 Basic Device

Short description: PC-based multi camera system, including operating software vcwin pro, configurable

Order number: 4-21-184

EAN: 4251692615034



Technical data

Performance Data

Processor	Intel Core i7-10700E 16 MB Cache, up to 4.50 GHz
Main memory	16 GB, DDR4, 3200MHz
Compact Flash	250 GB (of which approx. 3 GB are reserved)

Camera Interface

Basic device	1 x GigE Vision (no PoE)
Expansion card (optional)	4 x GigE Vision (PoE)
Supported camera series	Allied Vision: Mako, Manta, Manta PoE, Prosillica Matrix Vision: mvBlueCOUGAR-X Flir - Blackfly S, Ax5 Basler - ace classic, racer

Process Interface

Expansion card (optional)	16 IN / 16 OUT (PNP) 16 IN / 16 OUT (NPN) PROFINET
---------------------------	--

Further Interfaces

Ethernet	1 x Ethernet 10/100/1000 Mbit LAN 1 x Ethernet 10/100/1000 Mbit internal camera interface or direct connection
USB	2 x USB 3.0 at the front 4 x USB 3.2 at the back

Software

Parameterization	vcwin
Operation	webHMI

General Data

Power requirements	100 V ... 240 V AC via mains connection
Power consumption	70 W Basic Device max. 160 W Basic Device with camera card and process interfaces

Dimensions	482 mm x 88 mm x 398 mm
------------	-------------------------

Weight	approx. 8.6 kg
--------	----------------

Degree of protection (IP)	IP20
---------------------------	------

Safety class	I (protective conductor)
--------------	--------------------------

Operating temperature	10 °C ... 40 °C
-----------------------	-----------------

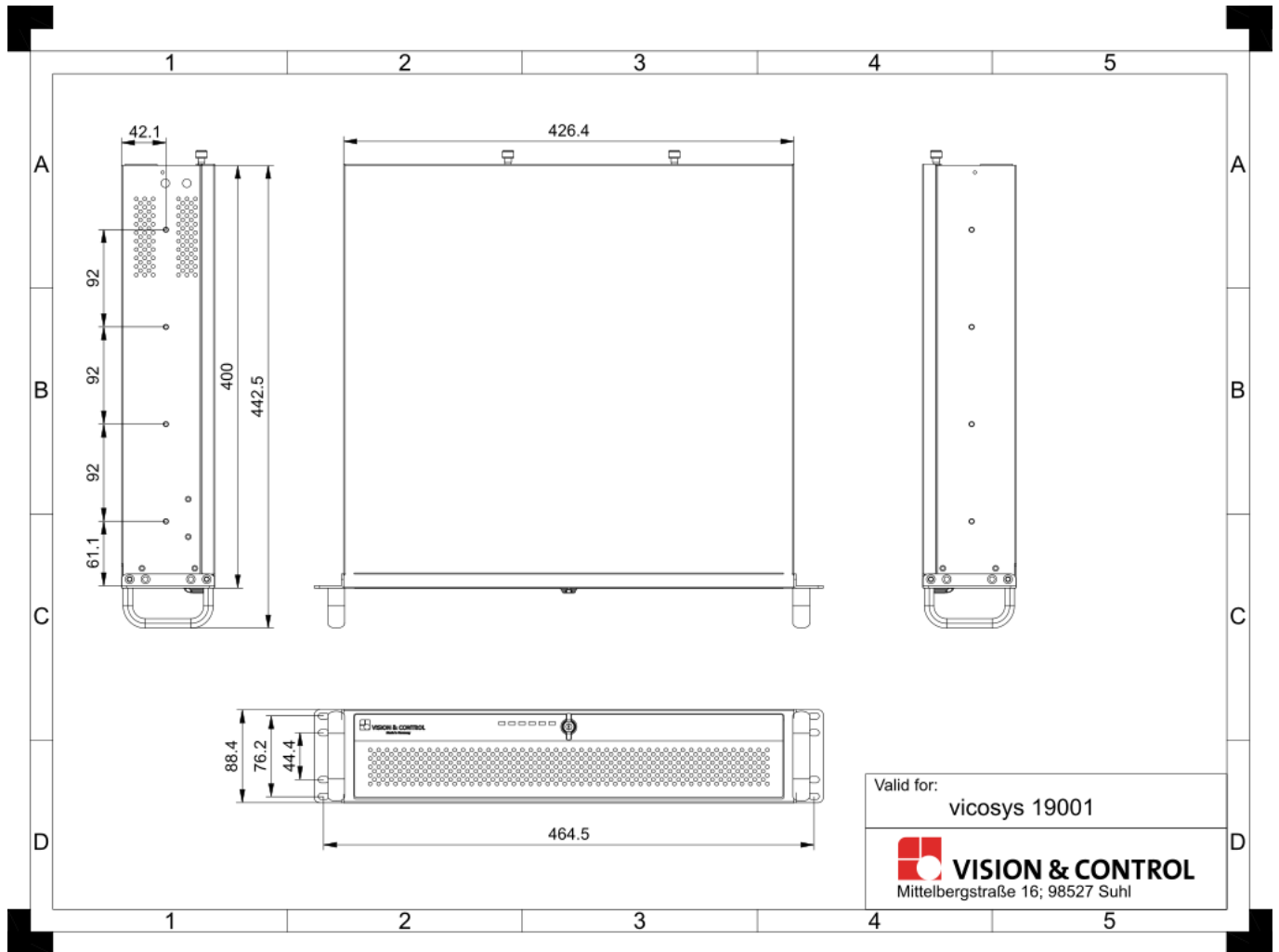
Notices

The vicosys® 19001 consists of the vicosys® 19001 basic device and optional components as well as optional software. The Device is assembled and configured by the manufacturer according to the selected components.

Accessories for Multi-Camera Systems - vicosys 19001 Basic Device

Order number	Title	Description
Terminal Board		
4-40-269	WAGO transfer device D-Sub	for dig. I/O card ADDI DATA, D-Sub socket connector, mounting feet for TS 35
4-40-288	Terminal Board DIN-50S-01	for digitale I/O card ADLINK, with 50-pin SCSI-II connector, for DIN rail mounting
4-40-268	Terminal Board PX901-DG	for dig. I/O card ADDI DATA, D-Sub connection board with LEDs, for DIN rail mounting
I/O Cable		
4-40-289	I/O cable ACL-10250-1	for digitale I/O card ADLINK, 50-pin SCSI-II cable, 1m, for terminal board DIN-50S-01
4-40-267	I/O cable 1x D-Sub, 2m	for dig. I/O card ADDI DATA, 37-pin D-Sub female connector to open cable end
4-40-266	I/O cable 2x D-Sub 2m	for dig. I/O card ADDI DATA, 37-pin D-Sub female connector to 37-pin D-Sub male connector
4-40-273	I/O cable 1x D-Sub, 5m	for dig. I/O card ADDI DATA, 37-pin D-Sub female connector to open cable end
4-40-274	I/O cable 1x D-Sub, 10m	for dig. I/O card ADDI DATA, 37-pin D-Sub female connector to open cable end
Software		
4-20-210	Asynchronous processes	licence for multi-camera system vicosys
4-20-209	Thermal imaging functions	licence for multi-camera system vicosys
3-90-032	Halcon	licence for multi-camera system vicosys
Expansion Cards		
4-21-178	Camera interface 4 x GigE	for vicosys 6x00, PoE, for connecting Gig-E vision cameras, incl. assembly
4-21-175	PROFINET card HILSCHER	for vicosys 5x00/6x00, PROFINET interface, incl. sw-license and assembly
4-21-170	Digital I/O Card ADDI DATA	for vicosys 5x00/6x00, 16 in-/ 16 outputs, Open Emitter (PNP), incl. assembly
4-21-171	Digital I/O Card ADLINK	for vicosys 5x00/6x00, 16 in-/ 16 outputs, Open Collector (NPN), incl. assembly

Drawings



Dimensional drawing in mm