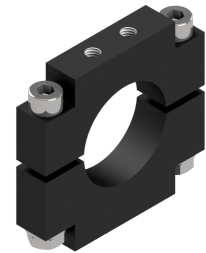


Lens Holder - Lens Holder d28

Short description: Holder for telecentric lenses and lightings with
d = 28 mm

Order number: 2-90-138



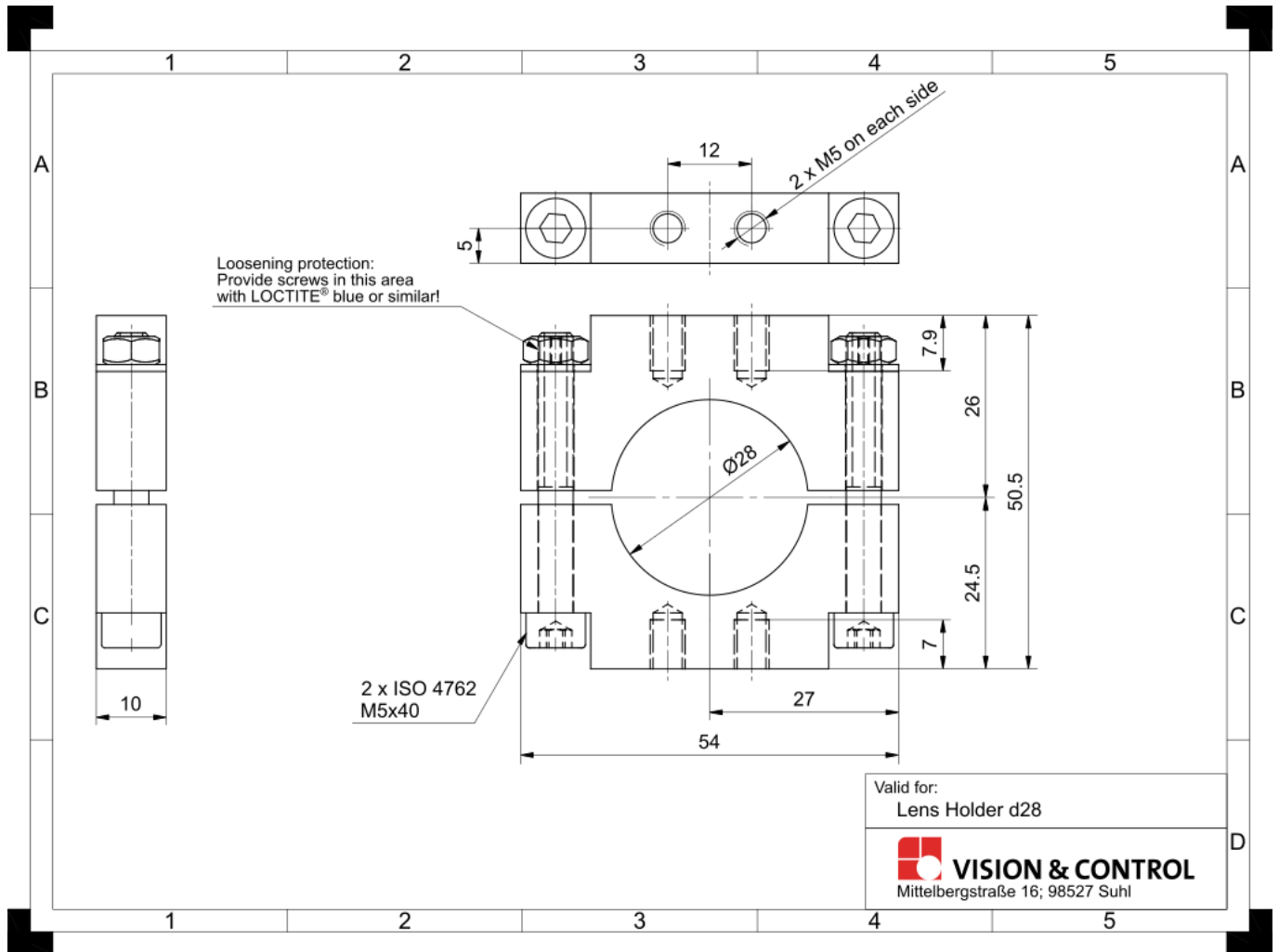
Characteristics

- Holder for lenses and telecentric lights
 - Robust mount for high mechanical loads
 - Support long lenses for vibration-free attachment
 - Fixation of the optical adjustment under extreme mechanical loads
 - Adaptable to various attachment situations such as direct attachment to the machine frame, attachment to a separate rail with attachment features or combination of rail and machine
-

Technical data

Material	Aluminium, black anodised
Weight	50 g
Clamping diameter	28 mm
Clamping length	10 mm
Can be combined with:	
Telecentric light	TZB30 series
Telecentric optic	TO30 series TO18 series

Drawings



Dimensional drawing in mm