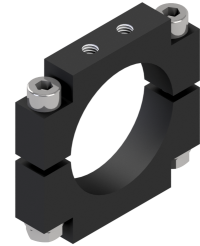


Lens Holder - Lens Holder d35,5

Short description: Holder for telecentric lenses and lightings with
d = 35,5 mm

Order number: 2-90-124



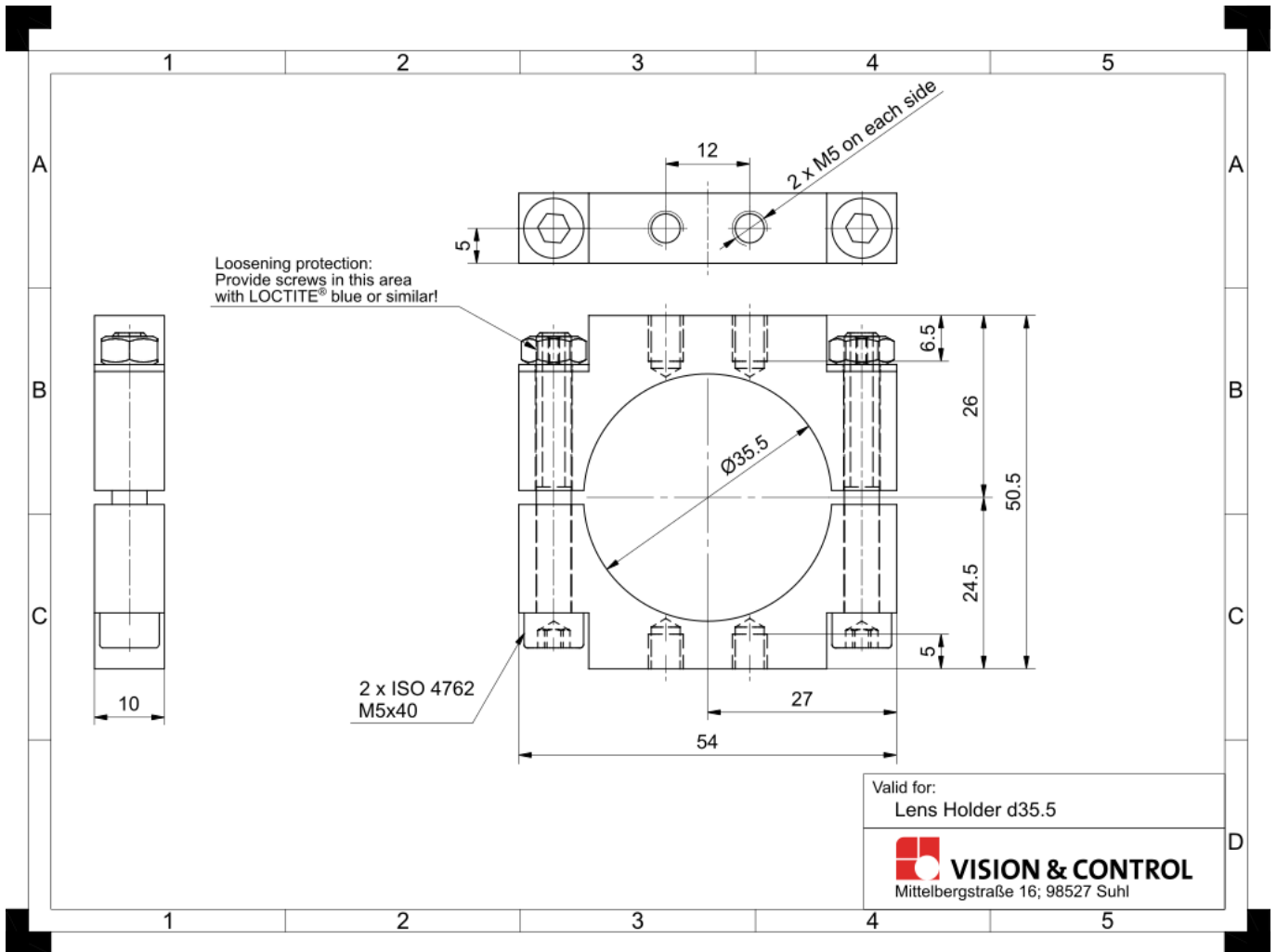
Characteristics

- Holder for lenses and telecentric lights
 - Robust mount for high mechanical loads
 - Support long lenses for vibration-free attachment
 - Fixation of the optical adjustment under extreme mechanical loads
 - Adaptable to various attachment situations such as direct attachment to the machine frame, attachment to a separate rail with attachment features or combination of rail and machine
-

Technical data

Material	Aluminium, black anodised
Weight	49 g
Clamping diameter	35.5 mm
Clamping length	10 mm
Can be combined with:	
Telecentric light	TZB10-P series TZB28 series
Telecentric optic	T10 series

Drawings



Dimensional drawing in mm