

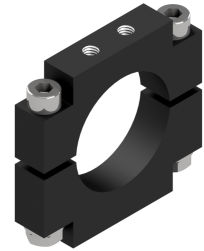
---

## Lens Holder - Lens Holder d32

---

**Short description:** Holder for telecentric lenses and lightings with  
d = 32 mm

**Order number:** 2-90-122



---

### Characteristics

- Holder for lenses and telecentric lights
  - Robust mount for high mechanical loads
  - Support long lenses for vibration-free attachment
  - Fixation of the optical adjustment under extreme mechanical loads
  - Adaptable to various attachment situations such as direct attachment to the machine frame, attachment to a separate rail with attachment features or combination of rail and machine
-

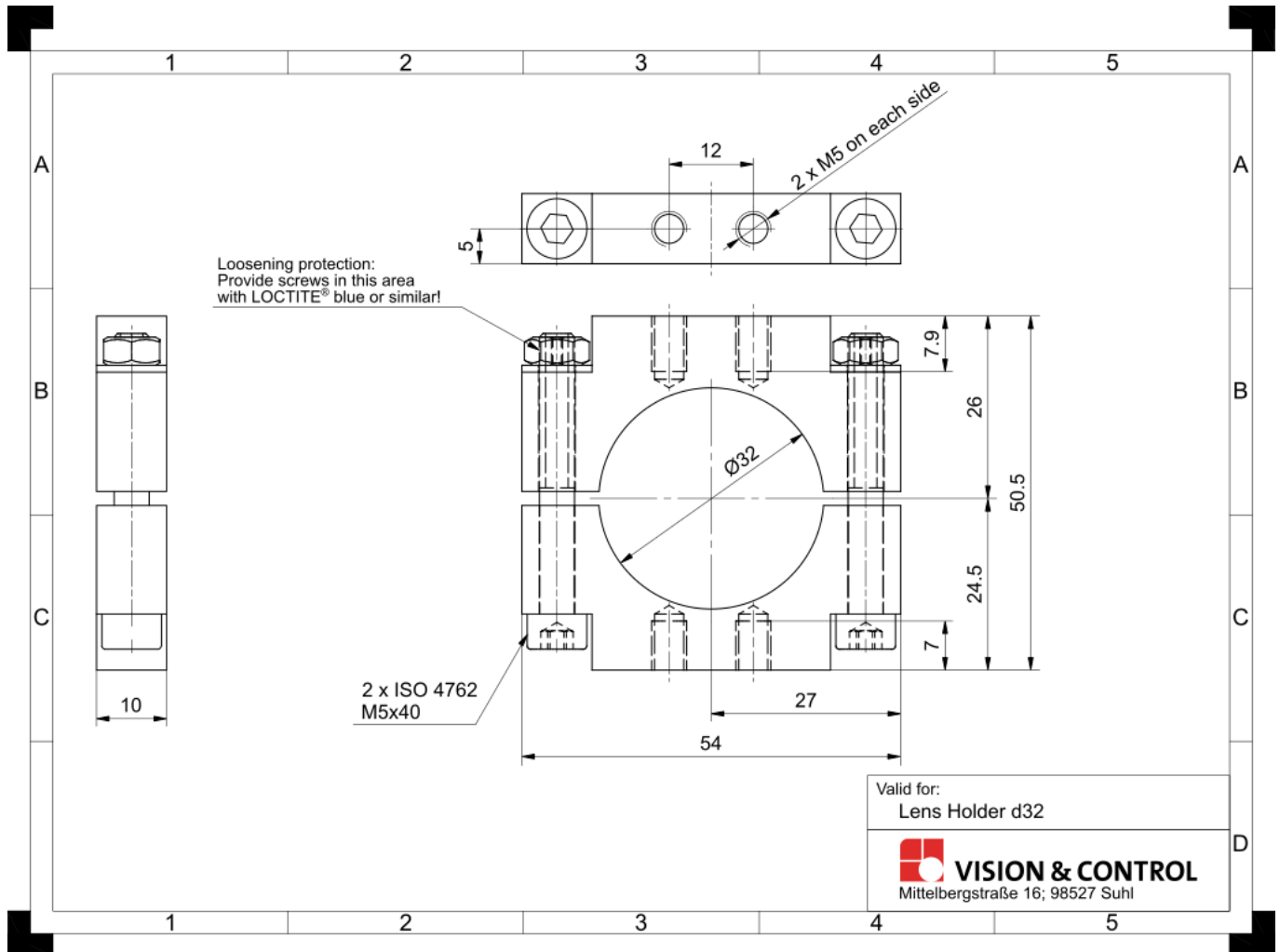
---

## Technical data

Material	Aluminium, black anodised
Weight	53 g
Clamping diameter	32 mm
Clamping length	10 mm
Can be combined with:	
Telecentric optic	T24 series T51 series T107 series T125 series TOB11 series TOB22 series TOB42 series

---

## Drawings



Dimensional drawing in mm