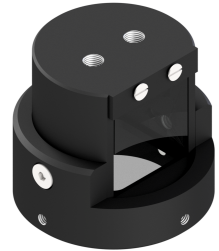


## Accessory 90° Deflection - Deflection mirror 90-28

---

**Short description:** 90° deflection, attachment for telecentric lenses and lightings with  $d = 28$  mm

**Order number:** 2-25-126



---

### Characteristics

- deflection of the beam path by 90 degrees
  - for easy installation in narrow installation conditions
  - attachable with locking
  - rotary and fixable version
  - robust housing, dustproof, ideal for industrial applications
-

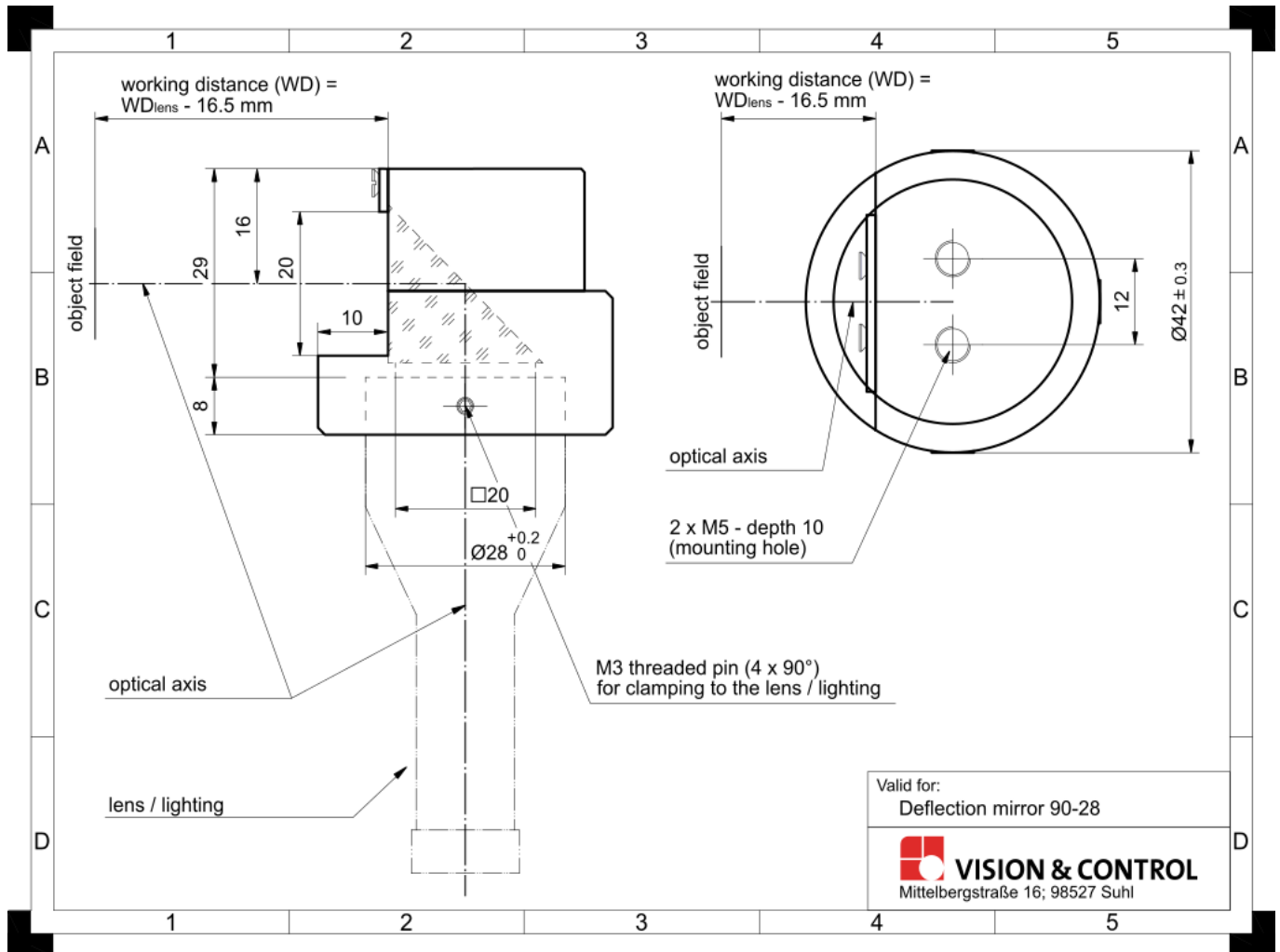
---

## Technical data

Deflecting element	Half-cube prism
Put on diameter	28 mm
Free visual field	20 mm x 20 mm
Shortening of the working distance	16.5 mm
Housing material	Aluminium, black anodised
Optical material	Glass
Dimensions	Length: 37 mm Diameter: 42 mm
Mounting options	2 x M5 mounting holes
Attachment to the lens	4 Grub screws arranged at 90° angles
Weight	85 g
Degree of protection	IP 50
Ambient temperature	- 10°C ... 55°C
Can be combined with:	
Telecentric optic	TO18 series

---

## Drawings



Dimensional drawing in mm