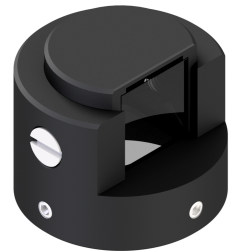

Accessory 90° Deflection - Deflection mirror 90-23

Short description: 90° deflection, attachment for telecentric lenses and lightings with $d = 23 \text{ mm}$

Order number: 2-25-111



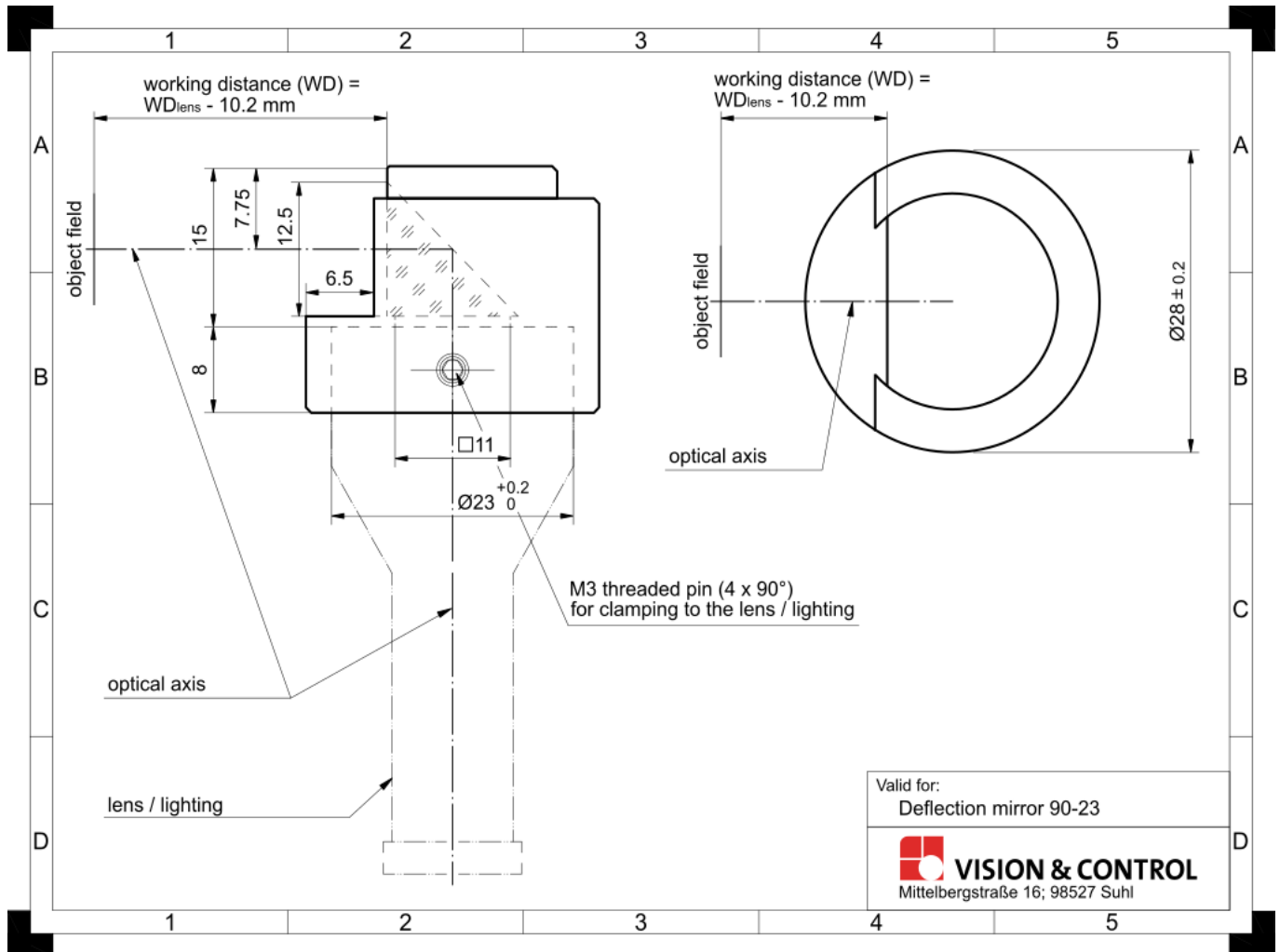
Characteristics

- deflection of the beam path by 90 degrees
 - for easy installation in narrow installation conditions
 - attachable with locking
 - rotary and fixable version
 - robust housing, dustproof, ideal for industrial applications
-

Technical data

Deflecting element	Half-cube prism
Put on diameter	23 mm
Free visual field	11 mm x 11 mm
Shortening of the working distance	10.2 mm
Housing material	Aluminium, black anodised
Optical material	Glass
Dimensions	Length: 23 mm Diameter: 28 mm
Attachment to the lens	4 Grub screws arranged at 90° angles
Weight	23 g
Degree of protection	IP 50
Ambient temperature	- 10°C ... 55°C
Can be combined with:	
Telecentric light	TZB10 series

Drawings



Dimensional drawing in mm