
Entocentric Lens - VCH 1.4/25

Short description: entocentric lens, sensor max. 2/3", F1.4, focal length 25 mm, MOD 250 mm

Order number: 2-10-217



Characteristics

- manually adjustable lens with fixed focal length for C and CS mount cameras
 - for close-up imaging with 2 megapixel CCD and CMOS sensors
 - sharp, high-resolution, high-contrast images with minimum loss of resolution from center to corners of the image
 - compact design, robust and durable
 - 3 fixing screws each (plus 2 knurling screws) for focus and iris - suitable for applications with vibrations and acceleration
-

Technical data

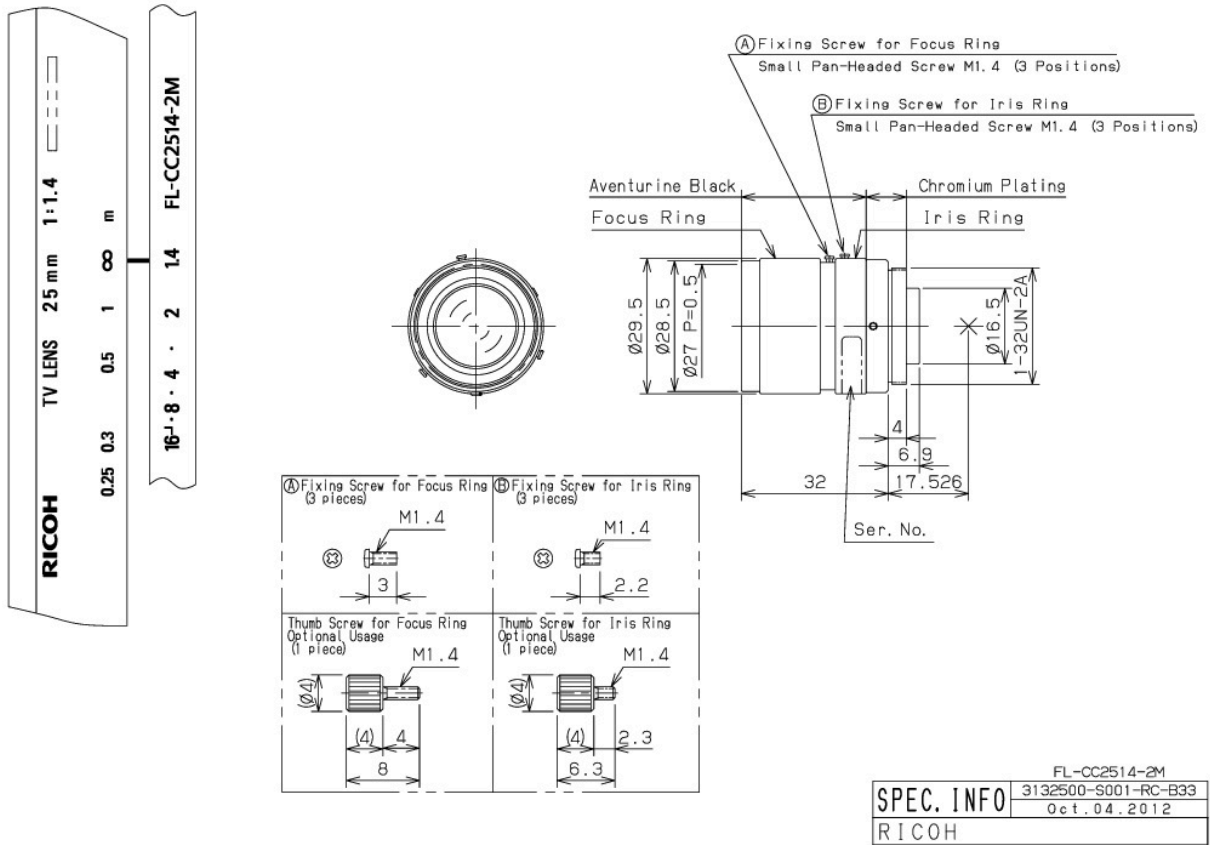
Focal length	25 mm
F-number	1.4 - 16C
MOD	0.25 m
Sensor size (max)	2/3"
Pixel size (min)	5.39 μ m
Resolution	2 MPixel
Angle of view with:	
• 2/3" sensor	19.9° x 15° x 24.8°
• 1/1.8" sensor	16.3° x 12.3° x 20.2°
• 1/2" sensor	14.5° x 10.9° x 18.1°
• 1/3" sensor	10.9° x 8.2° x 14.1°
• 1/4" sensor	7.7° x 5° x 9.2°
Lens length	32.0 mm
Lens diameter (max)	29.5 mm
Lens mount	C-Mount
Filter thread object-side	M27 x 0.5
Weight	55 g
Ambient temperature	-20°C bis +50°C

Accessories for Entocentric Lenses - VCH 1.4/25

Order number	Title	Description
Extension tubes		
2-90-415	Extension ring 0.5 mm	26 x 31 x 0.5 reduces the minimum object distance (MOD)
2-90-416	Extension ring 1.0 mm	26 x 31 x 1.0 reduces the minimum object distance (MOD)
2-90-410	Extension tube set C-mount	consist of extension rings with each 0.5 mm, 1 mm, 5 mm, 10 mm, 20 mm and 40 mm
C-Mount Adapter		
2-90-414	CS to C-mount adapter 5.0 mm	for connecting C-mount lenses with CS-mount cameras, length: 5 mm
Neutral density filter		
2-91-256	ND filter 3.0 M27x0.5	optical density 3.0 - 0.1% transmission, f-stop reduction 10, filter thread M27x0.5
2-91-246	ND filter 1.2 M27x0.5	optical density 1.2 - 6.3% transmission, f-stop reduction 4, filter thread M27x0.5
2-91-236	ND filter 0.6 M27x0.5	optical density 0.6 - 25% transmission, f-stop reduction 2, filter thread M27x0.5
UV Cut-Off Filter		
2-91-206	UV blocking filter M27x0.5	long-pass filter from 350 nm, usable as protective glass, filter thread M27x0.5
Daylight blocking filter		
2-91-216	IR filter M27x0.5	long-pass filter from 830 nm, daylight absorbing filter, filter thread M27x0.5
Polarising filters		
2-91-226	Pole filter M27x0.5	linear polarizing filter, range 420 nm - 780 nm, filter thread M27x0.5
Colour filter red		
2-91-265	Colour filter red M27x0.5	long-pass filter from 630 nm, red, filter thread M27x0.5
Colour filter green		
2-91-296	Colour filter green M27x0.5	band-pass filter, range 430 nm - 620 nm, filter thread M27x0.5

Order number	Title	Description
<i>Colour filter blue</i>		
2-91-283	Colour filter blue M27x0.5	band-pass filter, range 350 nm - 600 nm, filter thread M27x0.5
<i>Colour filter yellow</i>		
2-91-270	Colour filter yellow M27x0.5	long-pass filter from 530 nm, yellow, filter thread M27x0.5
<i>Adapter for lenses</i>		
1-29-151	Adapter ring d14 - M27x0.5	for RK613, for attachment to lenses with filter thread M27x0.5
1-33-027	Adapter ring d20.4 - M27x0.5	for R-CLR-38x20, for attachment to lenses with filter thread M27x0.5
1-10-006	Adapter ring d27 - M27x0.5	for RK1220, for attachment to lenses with filter thread M27x0.5
1-29-670	Adapter ring d41 - M27x0.5	for R-CLR-69x41 and RK2036, for attachment to lenses with filter thread M27x0.5

Drawings



Dimensional drawing in mm