

---

## Entocentric Lens - VCH 1.4/25 - CC2514-5M

---

**Short description:** entocentric lens, sensor max. 2/3", F1.4, focal length 25 mm, MOD 100 mm

**Order number:** 2-10-207



---

### Characteristics

- manually adjustable, high-resolution fixed-focal lens for C and CS mount cameras
  - for matrix and line cameras with 2/3" sensors (5 megapixels)
  - resolution of 140 lp/mm from center to corners of the image
  - extremely low distortion, suitable for image measurement
  - increased light distribution
  - compact design, robust and durable
  - 3 fixing screws each (plus 2 knurling screws) for focus and iris - suitable for applications with vibrations and acceleration
-

---

## Technical data

Focal length	25 mm
F-number	1.4 - 16C
MOD	0.1 m
Sensor size (max)	2/3"
Pixel size (min)	3.45 $\mu$ m
Resolution	5 MPixel
Angle of view with:	
• 2/3" sensor	19.9° x 15° x 24.8°
• 1/1.8" sensor	16.3° x 12.3° x 20.2°
• 1/2" sensor	14.5° x 10.9° x 18.1°
• 1/3" sensor	10.9° x 8.2° x 14.1°
• 1/4" sensor	7.7° x 5° x 9.2°
Lens length	44.0 mm
Lens diameter (max)	43.0 mm
Lens mount	C-Mount
Filter thread object-side	M40.5 x 0.5
Weight	130 g
Ambient temperature	-20°C bis +50°C

---

## Accessories for Entocentric Lenses - VCH 1.4/25 - CC2514-5M

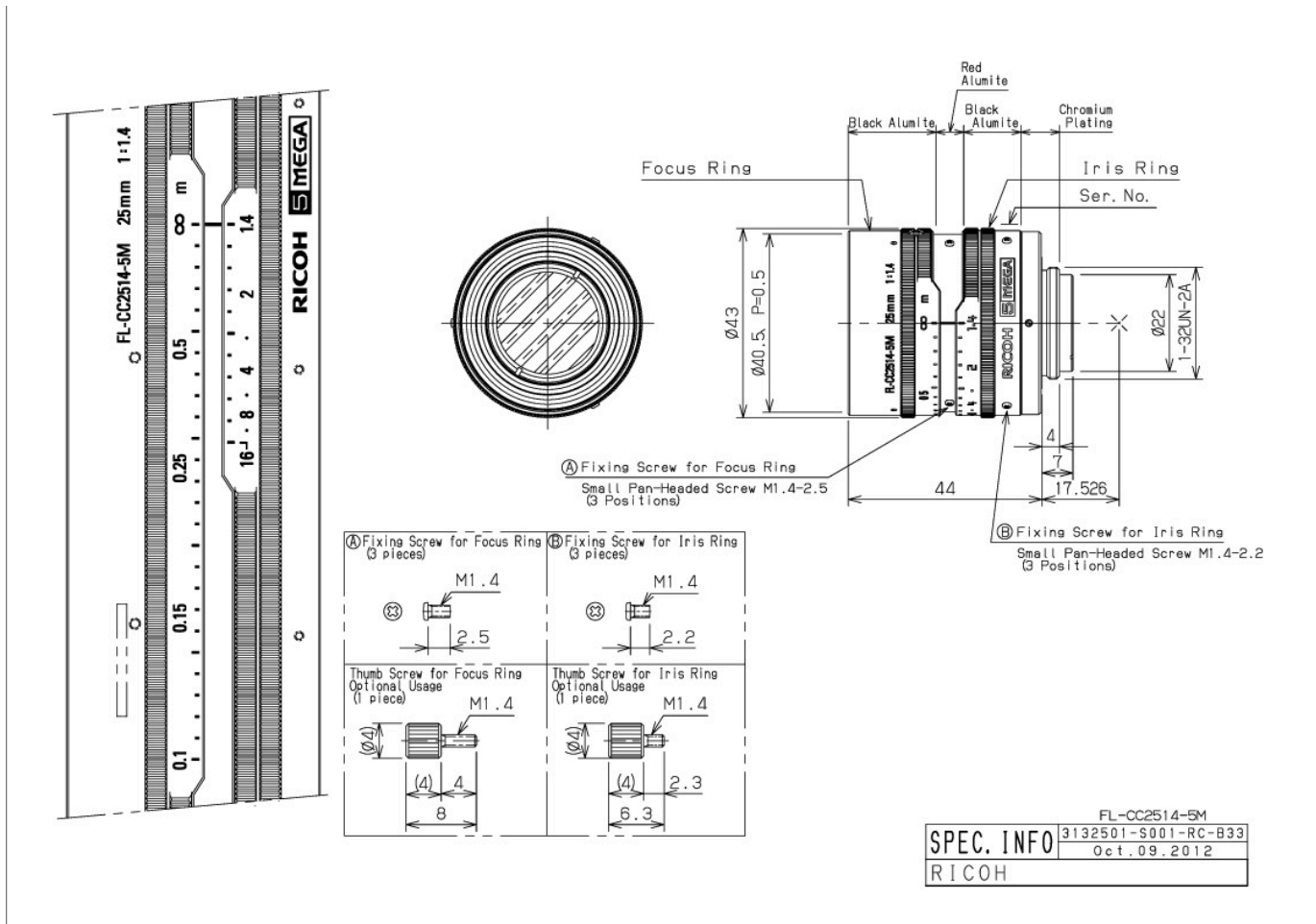
Order number	Title	Description
<b>Extension tubes</b>		
2-90-415	Extension ring 0.5 mm	26 x 31 x 0.5 reduces the minimum object distance (MOD)
2-90-416	Extension ring 1.0 mm	26 x 31 x 1.0 reduces the minimum object distance (MOD)
2-90-410	Extension tube set C-mount	consist of extension rings with each 0.5 mm, 1 mm, 5 mm, 10 mm, 20 mm and 40 mm
<b>Lens adapter c-mount</b>		
2-90-414	CS to C-mount adapter 5.0 mm	for connecting C-mount lenses with CS-mount cameras, length: 5 mm
<b>Neutral density filter</b>		
2-91-250	ND filter 3.0 M40.5x0.5	optical density 3.0 - 0.1% transmission, f-stop reduction 10, filter thread M40.5x0.5
2-91-240	ND filter 1.2 M40.5x0.5	optical density 1.2 - 6.3% transmission, f-stop reduction 4, filter thread M40.5x0.5
2-91-230	ND filter 0.6 M40.5x0.5	optical density 0.6 - 25% transmission, f-stop reduction 2, filter thread M40.5x0.5
<b>Daylight blocking filter</b>		
2-91-210	IR filter M40.5x0.5	long-pass filter from 830 nm, daylight absorbing filter, filter thread M40.5x0.5
<b>Polarising filters</b>		
2-91-220	Pole filter M40.5x0.5	linear polarizing filter, range 420 nm - 780 nm, filter thread M40.5x0.5
<b>Colour filter blue</b>		
2-91-288	Colour filter blue M40.5x0.5	band-pass filter, range 350 nm - 600 nm, filter thread M40.5x0.5
<b>UV Cut-Off Filter</b>		
2-91-200	UV blocking filter M40.5x0.5	long-pass filter from 350 nm, usable as protective glass, filter thread M40.5x0.5
<b>Colour filter red</b>		
2-91-268	Colour filter red M40.5x0.5	long-pass filter from 630 nm, red, filter thread M40.5x0.5

---

<b>Order number</b>	<b>Title</b>	<b>Description</b>
<b><i>Colour filter green</i></b>		
2-91-301	Colour filter green M40.5x0.5	band-pass filter, range 430 nm - 620 nm, filter thread M40.5x0.5
<b><i>Colour filter yellow</i></b>		
2-91-275	Colour filter yellow M40.5x0.5	long-pass filter from 530 nm, yellow, filter thread M40.5x0.5

---

**Drawings**



Dimensional drawing in mm