
Entocentric Lens - VCH 1.4/8 - CC0814-5M

Short description: entocentric lens, sensor max. 2/3", F1.4, focal length 8 mm, MOD 100 mm

Order number: 2-10-205



Characteristics

- manually adjustable, high-resolution fixed-focal lens for C and CS mount cameras
 - for matrix and line cameras with 2/3" sensors (5 megapixels)
 - resolution of 140 lp/mm from center to corners of the image
 - increased light distribution
 - compact design, robust and durable
 - 3 fixing screws each (plus 2 knurling screws) for focus and iris - suitable for applications with vibrations and acceleration
-

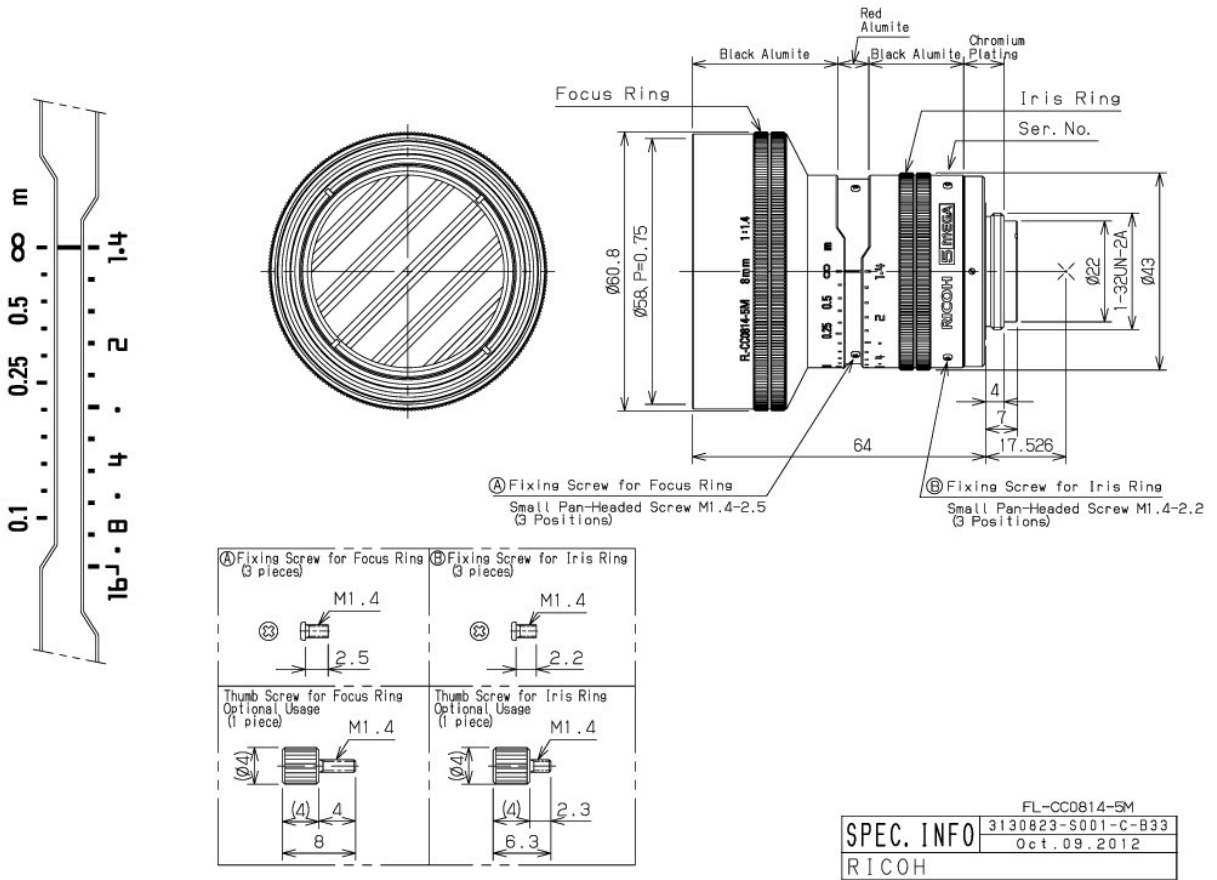
Technical data

Focal length	8 mm
F-number	1.4 - 16C
MOD	0.1 m
Sensor size (max)	2/3"
Pixel size (min)	3.45 μ m
Resolution	5 MPixel
Angle of view with:	
• 2/3" sensor	57.6° x 44.8° x 69°
• 1/1.8" sensor	48.4° x 37.2° x 58.2°
• 1/2" sensor	43.6° x 33.3° x 53.1°
• 1/3" sensor	33.3° x 25.3° x 42.3°
• 1/4" sensor	23.9° x 15.6° x 28.4°
Lens length	64.0 mm
Lens diameter (max)	60.8 mm
Lens mount	C-Mount
Filter thread object-side	M58.0 x 0.75
Weight	260 g
Ambient temperature	-20°C bis +50°C

Accessories for Entocentric Lenses - VCH 1.4/8 - CC0814-5M

Order number	Title	Description
<i>Extension tubes</i>		
2-90-415	Extension ring 0.5 mm	26 x 31 x 0.5 reduces the minimum object distance (MOD)
2-90-416	Extension ring 1.0 mm	26 x 31 x 1.0 reduces the minimum object distance (MOD)
2-90-410	Extension tube set C-mount	consist of extension rings with each 0.5 mm, 1 mm, 5 mm, 10 mm, 20 mm and 40 mm
<i>Lens adapter c-mount</i>		
2-90-414	CS to C-mount adapter 5.0 mm	for connecting C-mount lenses with CS-mount cameras, length: 5 mm

Drawings



Dimensional drawing in mm