
vicotar[®] Telecentric Lens - TO44/6.2-150-V-BW

Short description:	Telecentric Lens, C-mount, Sensor opt. 1/3", aperture F6 - F22, blue
Order number:	2-05-621
EAN:	4251692621493
Actual Notice:	Also available with fixed aperture on request. (F-numbers in the range as for adjustable aperture)



Characteristics

- telecentric measurement objective with object-sided telecentric beam path
 - color corrected for the visible spectral range and near infrared
 - color correction extended deep into the blue spectral range
 - very well suited for blue LEDs including "Deep Blue" LEDs
 - thus especially suitable for white LEDs, as these have a strong blue light component
 - high resolution, low lateral chromatic aberration, low distortion, low telecentric error
 - adjustable aperture with identification of the aperture numbers, arrestable
 - robust industrial design
-

Technical data

Image scale	0.14
Spectral range	400 nm - 950 nm
Working distance	150 mm
Camera distance (object-camera flange)	332.04 mm
Object field diagonal (max.)	44 mm
Sensor format (opt.)	1/3"
Image field diagonal (max.)	6.2 mm
Suitable for camera resolution	5.6 MPixel
Recommended pixel size	1.75 μ m
Aperture	variable (F6 - F22)
Lens mount	C-Mount
Filter thread, object-side	M52 x 0.75
Filter thread, camera-side	M20.5 x 0.5
Weight	318 g
Usable object field with:	
• 1/3" sensor (4.8 x 3.6 mm ²)	34.3 mm x 25.7 mm
• 1/4" sensor (3.4 x 2.2 mm ²)	24.3 mm x 15.7 mm

Notices

The lightings combination products shown are a selection. Depending on the application, other colors and light source types can also be used.

Can be combined with

Order number	Title	Description
<i>TZB51-UDC-a Serie</i>		
1-10-941	TZB51-B470/UDC/-a	telecentric light, blue, If diameter: 49 mm, flashable by flash controller
1-10-942	TZB51-W5K7/UDC/-a	telecentric light, white, If diameter: 49 mm, flashable by flash controller
1-10-943	TZB51-IR880/UDC/-a	telecentric light, IR850, If diameter: 49 mm, flashable by flash controller
1-10-940	TZB51-R625/UDC/-a	telecentric light, red, If diameter: 49 mm, flashable by flash controller
1-10-944	TZB51-G525/UDC/-a	telecentric light, green, If diameter: 49 mm, flashable by flash controller
<i>TZB51 series</i>		
1-10-201	TZB51-B470-24V	telecentric light, blue, If diameter: 49 mm, static, cable open-ended
1-10-198	TZB51-W5K7-24V	telecentric light, white, If diameter: 49 mm, static, cable open-ended
1-10-202	TZB51-IR880-24V	telecentric light, IR850, If diameter: 49 mm, static, cable open-ended
1-10-200	TZB51-R625-24V	telecentric light, red, If diameter: 49 mm, static, cable open-ended
1-10-215	TZB51-G525-24V	telecentric light, green, If diameter: 49 mm, static, cable open-ended
<i>R-CLR-69-SL series</i>		
1-33-007	R-CLR-69x41-B470-SL	ring light, blue, coaxial, If diameter: 41/69 mm, smart light technology
<i>RK2036-24V series</i>		
1-29-602	RK2036-B470-24V/C	ring light, blue, coaxial, If diameter: 41/69 mm, controlled, pot.: 0-10V,
<i>R-CLR-100-SL series</i>		
1-33-012	R-CLR-100x73-B470-SL	ring light, blue, coaxial, If diameter: 73/100 mm, smart light technology
<i>RK3652-24V series</i>		

Order number	Title	Description
1-29-702	RK3652-B470-24V/C	ring light, blue, coaxial, If diameter: 73/100 mm, controlled, pot.: 0-10V,
R-CLR-132-SL series		
1-33-017	R-CLR-132x104-B470-SL	ring light, blue, coaxial, If diameter: 104/132 mm, smart light technology
RK5268-24V series		
1-29-802	RK5268-B470-24V/C	ring light, blue, coaxial, If diameter: 104/132 mm, controlled, pot.: 0-10V,

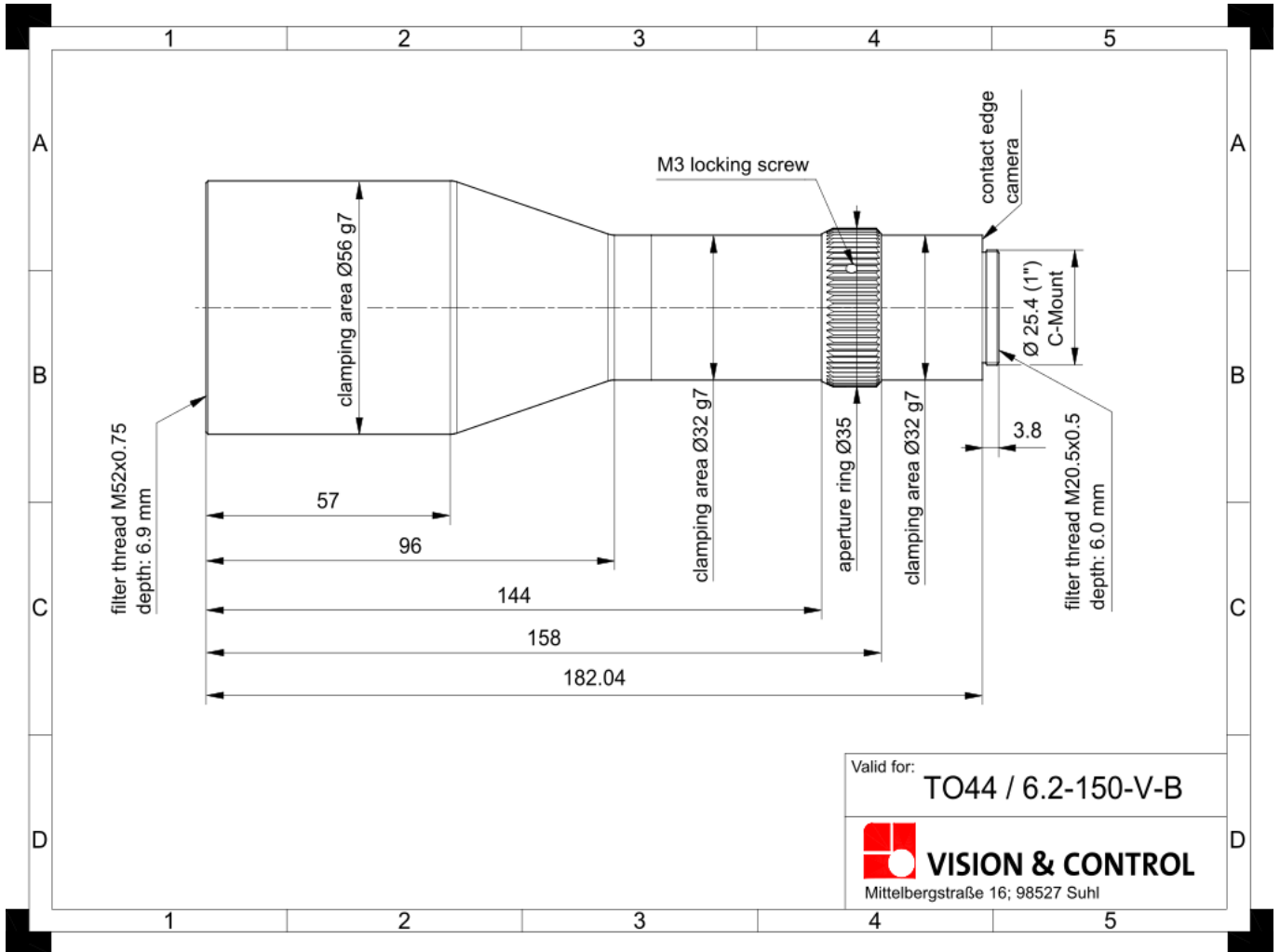
Accessories for Telecentric Lenses - TO44/6.2-150-V-BW

Order number	Title	Description
Adjustment Aids		
5-10-112	Adjustment aid 10	for easy adjustment to 10 mm depth of field, for image scale 0.5 - 0.2
Lens mount		
2-90-122	Lens Holder d32	Holder for telecentric lenses and lightings with d = 32 mm
Extension tubes		
2-90-415	Extension ring 0.5 mm	26 x 31 x 0.5 reduces the minimum object distance (MOD)
2-90-416	Extension ring 1.0 mm	26 x 31 x 1.0 reduces the minimum object distance (MOD)
2-90-419	Extension ring 0.1 mm	25.5 x 29 x 0.1 reduces the minimum object distance (MOD)
2-90-420	Extension ring 0.2 mm	25.5 x 29 x 0.2 reduces the minimum object distance (MOD)
Thread adapter c-mount		
5-00-011	Thread adapter C-Mount-M42	Adapter for mounting of lenses with C-mount on cameras with M42x1 mount
2-90-414	CS to C-mount adapter 5.0 mm	for connecting C-mount lenses with CS-mount cameras, length: 5 mm

Order number	Title	Description
<i>Neutral density filter</i>		
2-91-174	ND filter 3.0 M52x0.75	optical density 3.0 - 0.1% transmission, f-stop reduction 10, filter thread M52x0.75
2-91-164	ND filter 1.2 M52x0.75	optical density 1.2 - 6.3% transmission, f-stop reduction 4, filter thread M52x0.75
2-91-154	ND filter 0.6 M52x0.75	optical density 0.6 - 25% transmission, f-stop reduction 2, filter thread M52x0.75
<i>Daylight blocking filter</i>		
2-91-131	IR filter M20.5x0.5	long-pass filter from 830 nm, daylight absorbing filter, filter thread M20.5x0.5
2-91-134	IR filter M52x0.75	long-pass filter from 830 nm, daylight absorbing filter, filter thread M52x0.75
<i>Polarising filters</i>		
2-91-144	Pole filter M52x0.75	linear polarizing filter, range 420 nm - 780 nm, filter thread M52x0.75
<i>Colour filter blue</i>		
2-91-290	Colour filter blue M52x0.75	band-pass filter, range 350 nm - 600 nm, filter thread M52x0.75
<i>UV Cut-Off Filter</i>		
2-91-124	UV blocking filter M52x0.75	long-pass filter from 350 nm, usable as protective glass, filter thread M52x0.75
<i>Colour filter red</i>		
2-91-259	Colour filter red M20.5x0.5	long-pass filter from 630 nm, red, filter thread M20.5x0.5
2-91-262	Colour filter red M52x0.75	long-pass filter from 630 nm, red, filter thread M52x0.75
<i>Colour filter green</i>		
2-91-303	Colour filter green M52x0.75	band-pass filter, range 430 nm - 620 nm, filter thread M52x0.75
<i>Colour filter yellow</i>		
2-91-277	Colour filter yellow M52x0.75	long-pass filter from 530 nm, yellow, filter thread M52x0.75

Order number	Title	Description
<i>Deflection mirror 90° series</i>		
2-25-115	Deflection mirror 90-56	90° deflection, attachment for telecentric lenses and lightings with d = 56 mm
<i>Adapters for attaching lights to lenses</i>		
1-29-676	Adapter ring d41 - M52x0.75	for R-CLR-69x41 and RK2036, for attachment to lenses with filter thread M52x0.75
1-29-772	Adapter ring d73 - M52x0.75	for R-CLR-100x73 und RK3652, for attachment to lenses with filter thread M52x0.75
1-29-870	Adapter ring d104 - M52x0.75	for R-CLR-132x104 and RK5268, for attachment to lenses with filter thread M52x0.75
<i>Beam splitter STE60x60</i>		
1-20-050	STE60x60-VIS	Beam splitter unit for coaxial light system, optimized for 450-700 nm
1-20-022	Adapter STE60x60 - TZ056	Attachment of the STE60x60 to telecentric lenses and lightings with d = 56mm

Drawings



Dimensional drawing in mm