
vicotar® Telecentric Lens - TO18/4.1-100-F14-BW-RF

Short description:	Telecentric Lens, C-mount, sensor max. 1/4", aperture F14, vibration-proof, blue
Order number:	2-05-543
EAN:	4251692620946



Characteristics

- telecentric measurement objective with object-sided telecentric beam path
 - color corrected for the visible spectral range and near infrared
 - color correction extended deep into the blue spectral range
 - very well suited for blue LEDs including "Deep Blue" LEDs
 - thus especially suitable for white LEDs, as these have a strong blue light component
 - high resolution, low lateral chromatic aberration, low distortion, low telecentric error
 - fixed aperture
 - robust industrial design
-

Technical data

Image scale	0.232
Spectral range	450 nm - 950 nm
Working distance	100.0 mm
Camera distance (object-camera flange)	157 mm
Object field diagonal (max)	18 mm
Sensor format (max)	1/4"
Image field diagonal (max)	4.1 mm
Suitable for camera resolution	1.9 MPixel
Recommended pixel size	2 μ m
Aperture	fixed (F14)
Lens length	57.0 mm
Lens diameter (max)	29.4 mm
Lens mount	C-Mount
Filter thread, object-side	M27x0.5 (filter adapter)
Weight	68 g
Usable object field with:	
• 1/4" sensor	14.7 mm x 9.5 mm

Notices

Die dargestellten Beleuchtungskombinationen stellen eine Auswahl dar. Je nach Anwendung sind auch andere Farben und Lichtquellentypen verwendbar.

Can be combined with

Order number	Title	Description
<i>pictor N4xx</i>		
3-12-500	pictor N403M-ETH	smart camera, ethernet, 1/4" CMOS, 736x480, mono, 120fps, incl. software vcwin
3-12-501	pictor N403C-ETH	smart camera, ethernet, 1/4" CMOS, 736x480, color, 120fps, incl. software vcwin
<i>AVT - Manta</i>		
4-22-201	Manta G-031B	Gigabit Ethernet camera 1/4" CCD, 640x480, 125fps, mono, global shutter
4-22-202	Manta G-031C	Gigabit Ethernet camera 1/4" CCD, 640x480, 125fps, colour, global shutter
<i>AVT - Manta (PoE)</i>		
4-22-322	Manta G-031B PoE	PoE - Gigabit Ethernet Camera 1/4" CCD, 658x492, 125fps, mono, global shutter
4-22-323	Manta G-031C PoE	PoE - Gigabit Ethernet Camera 1/4" CCD, 658x492, 125fps, colour, global shutter
<i>TZB28-P-SL series</i>		
1-33-230	TZB28-B450-P-SL	telecentric light, blue, lf diameter: 28 mm, smart light
1-33-231	TZB28-IR850-P-SL	telecentric light, IR850, lf diameter: 28 mm, smart light
<i>TZB28-P-24V series</i>		
1-33-240	TZB28-B450-P-24V	telecentric light, blue, lf diameter: 28 mm, 24V, switchable
1-33-284	TZB28-B450-HP-24V	telecentric light, blue, lf diameter: 28 mm, 24V, switchable, high power
1-33-241	TZB28-IR850-P-24V	telecentric light, IR850, lf diameter: 28 mm, 24V, switchable
1-33-285	TZB28-IR850-HP-24V	telecentric light, IR850, lf diameter: 28 mm, 24V, switchable, high power
<i>R-CLR-38-SL series</i>		
1-33-022	R-CLR-38x20-B470-SL	ring light, blue, coaxial, lf diameter: 20/38 mm, smart light technology
<i>RK1220-24V-BA series</i>		

Order number	Title	Description
1-10-243	RK1220-B470-24V/BA	ring light, blue, coaxial, If diameter: 24/40 mm, static/switchable
R-CLR-69-SL series		
1-33-007	R-CLR-69x41-B470-SL	ring light, blue, coaxial, If diameter: 41/69 mm, smart light technology
RK2036-24V series		
1-29-602	RK2036-B470-24V/C	ring light, blue, coaxial, If diameter: 41/69 mm, controlled, pot.: 0-10V,

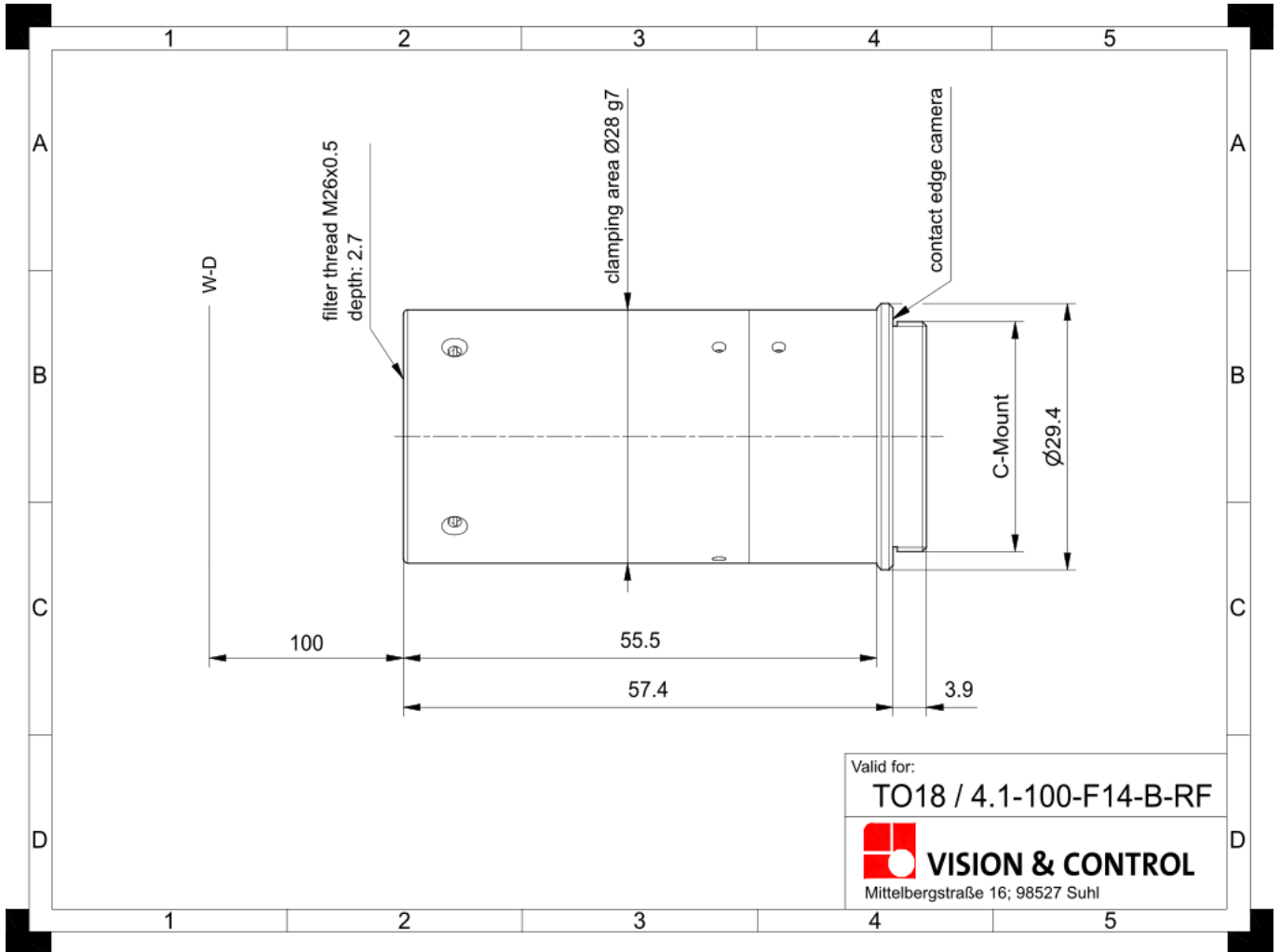
Accessories for Telecentric Lenses - TO18/4.1-100-F14-BW-RF

Order number	Title	Description
Adjustment Aids		
5-10-112	Adjustment aid 10	for easy adjustment to 10 mm depth of field, for image scale 0.5 - 0.2
5-10-114	Adjustment aid 20	for easy adjustment to 20 mm depth of field, for image scale 0.2 - 0.1
Lens mount		
2-90-138	Lens Holder d28	Holder for telecentric lenses and lightings with d = 28 mm
Extension tubes		
2-90-415	Extension ring 0.5 mm	26 x 31 x 0.5 reduces the minimum object distance (MOD)
2-90-416	Extension ring 1.0 mm	26 x 31 x 1.0 reduces the minimum object distance (MOD)
2-90-419	Extension ring 0.1 mm	25.5 x 29 x 0.1 reduces the minimum object distance (MOD)
2-90-420	Extension ring 0.2 mm	25.5 x 29 x 0.2 reduces the minimum object distance (MOD)
Lens adapter c-mount		
2-90-414	CS to C-mount adapter 5.0 mm	for connecting C-mount lenses with CS-mount cameras, length: 5 mm

Order number	Title	Description
<i>Neutral density filter</i>		
2-91-256	ND filter 3.0 M27x0.5	optical density 3.0 - 0.1% transmission, f-stop reduction 10, filter thread M27x0.5
2-91-246	ND filter 1.2 M27x0.5	optical density 1.2 - 6.3% transmission, f-stop reduction 4, filter thread M27x0.5
2-91-236	ND filter 0.6 M27x0.5	optical density 0.6 - 25% transmission, f-stop reduction 2, filter thread M27x0.5
<i>Daylight blocking filter</i>		
2-91-133	IR filter M26x0.5	long-pass filter from 830 nm, daylight absorbing filter, filter thread M26x0.5
<i>Polarising filters</i>		
2-91-226	Pole filter M27x0.5	linear polarizing filter, range 420 nm - 780 nm, filter thread M27x0.5
<i>Colour filter blue</i>		
2-91-283	Colour filter blue M27x0.5	band-pass filter, range 350 nm - 600 nm, filter thread M27x0.5
<i>UV Cut-Off Filter</i>		
2-91-123	UV blocking filter M26x0.5	long-pass filter from 350 nm, usable as protective glass, filter thread M26x0.5
<i>Colour filter red</i>		
2-91-265	Colour filter red M27x0.5	long-pass filter from 630 nm, red, filter thread M27x0.5
<i>Colour filter green</i>		
2-91-296	Colour filter green M27x0.5	band-pass filter, range 430 nm - 620 nm, filter thread M27x0.5
<i>Colour filter yellow</i>		
2-91-270	Colour filter yellow M27x0.5	long-pass filter from 530 nm, yellow, filter thread M27x0.5
<i>Filter adapter</i>		
2-91-112	Filter adapter M26-M27	step-up ring for use of a M27x0.5 filter on a M26x0.5 filter thread
<i>Deflection mirror 90° series</i>		

Order number	Title	Description
2-25-126	Deflection mirror 90-28	90° deflection, attachment for telecentric lenses and lightings with d = 28 mm
<i>Adapters for attaching lights to lenses</i>		
1-33-026	Adapter ring d20.4 - M26x0.5	for R-CLR-38x20, for attachment to lenses with filter thread M26x0.5
1-10-007	Adapter ring d27 - M26x0.5	for RK1220, for attachment to lenses with filter thread M26x0.5
1-29-673	Adapter ring d41 - M26x0.5	for R-CLR-69x41 and RK2036, for attachment to lenses with filter thread M26x0.5
<i>Beam splitter STE30x30</i>		
1-18-050	STE30x30-VIS	Beam splitter unit for coaxial light system, optimized for 450-700 nm
1-18-026	Adapter STE30x30 - TZ028	Attachment of the STE30x30 to telecentric lenses and lightings with d = 28 mm

Drawings



Dimensional drawing in mm