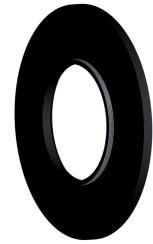


Accessory for Ring Lights - Adapter ring d73 - M39x0.5

Short description: for R-CLR-100x73 und RK3652, for attachment to lenses with filter thread M39x0.5

Order number: 1-29-771



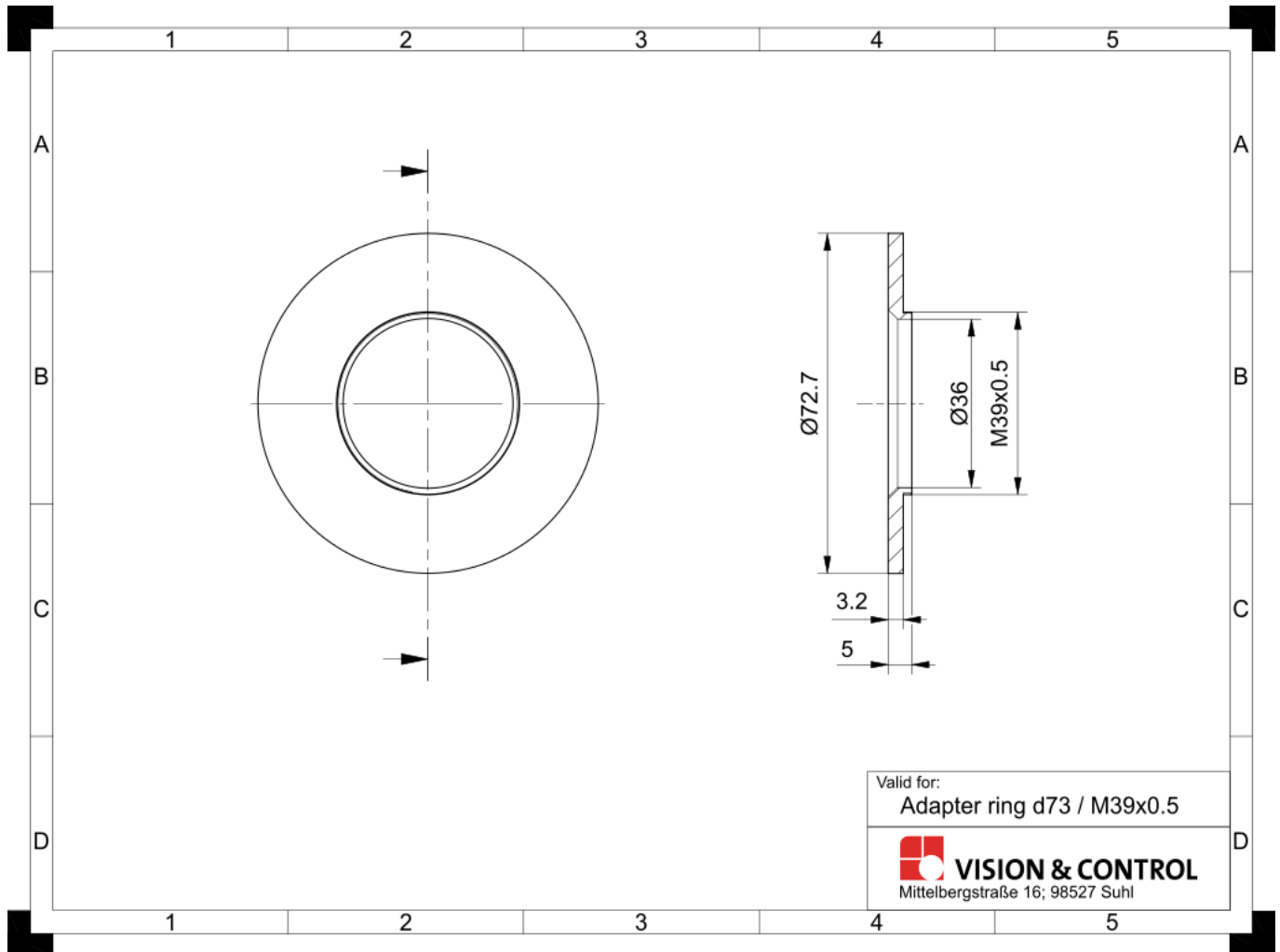
Characteristics

- lens adapter for ring lights
 - for attaching ring lights to lenses with filter thread M39 x 0.5
-

Technical data

Material	Aluminium, black anodised
Clamping diameter	73 mm
Thread	M39x0.5
Can be combined with:	
Ringbeleuchtung	R-CLR-100x73-Serie, RK3652-Serie

Drawings



Dimensional drawing in mm