

Accessory for Ring Lights - Adapter ring d14 - M25.5x0.5

Short description: for RK613, for attachment to lenses with filter thread M25.5x0.5

Order number: 1-29-153



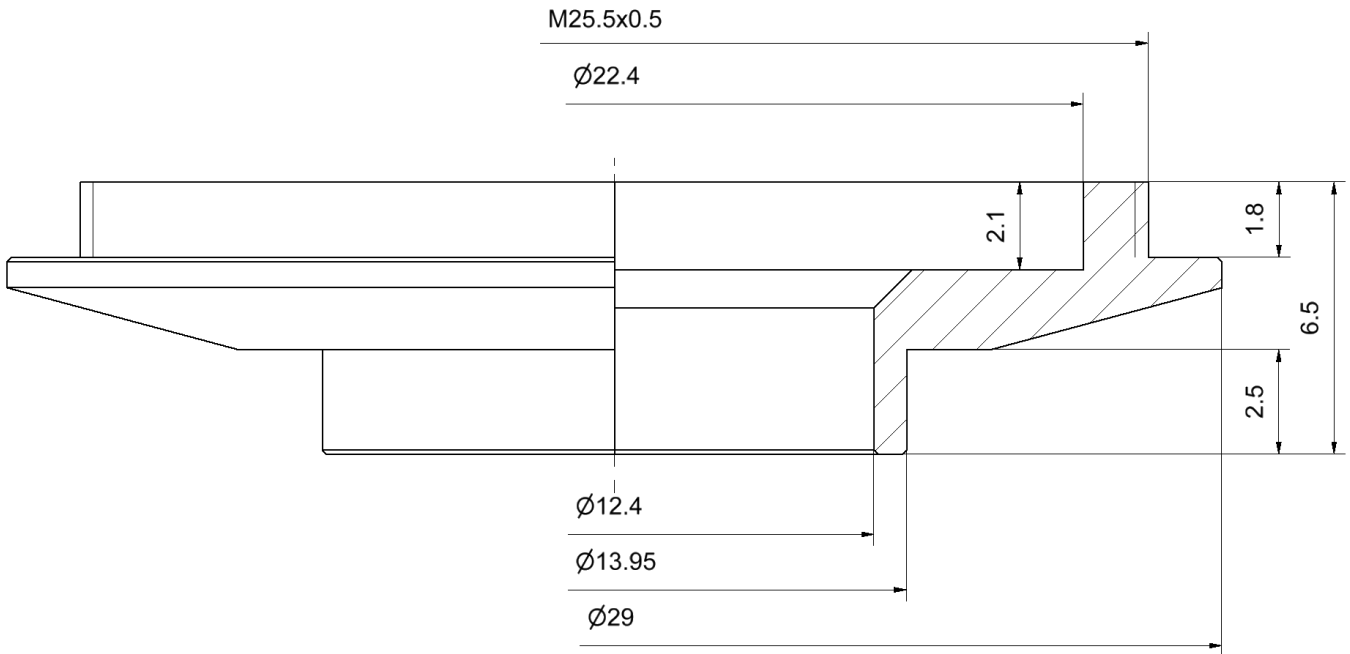
Characteristics

- lens adapter for ring lights
 - for attaching ring lights to lenses with filter thread M25.5 x 0.5
-

Technical data

Material	Aluminium, black anodised
Clamping diameter	14 mm
Thread	M25.5x0.5
Can be combined with:	
Ringbeleuchtung	RK613 series

Drawings



Dimensional drawing in mm