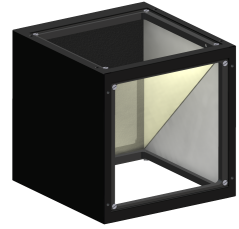


Beam Splitter Unit - STE60x60-VIS

Short description: Beam splitter unit for coaxial light system,
optimized for 450-700 nm

Order number: 1-20-050



Characteristics

- Beam splitter unit for setting up a coaxial light
 - modular design - type and position of lens and lighting are freely selectable
 - in combination with the DL60x60 lighting results in a very homogeneous light source
 - various adapters for lighting and lenses allow individual scenarios
 - suitable for industry thanks to robust, anodized aluminium housing with high dimensional stability
-

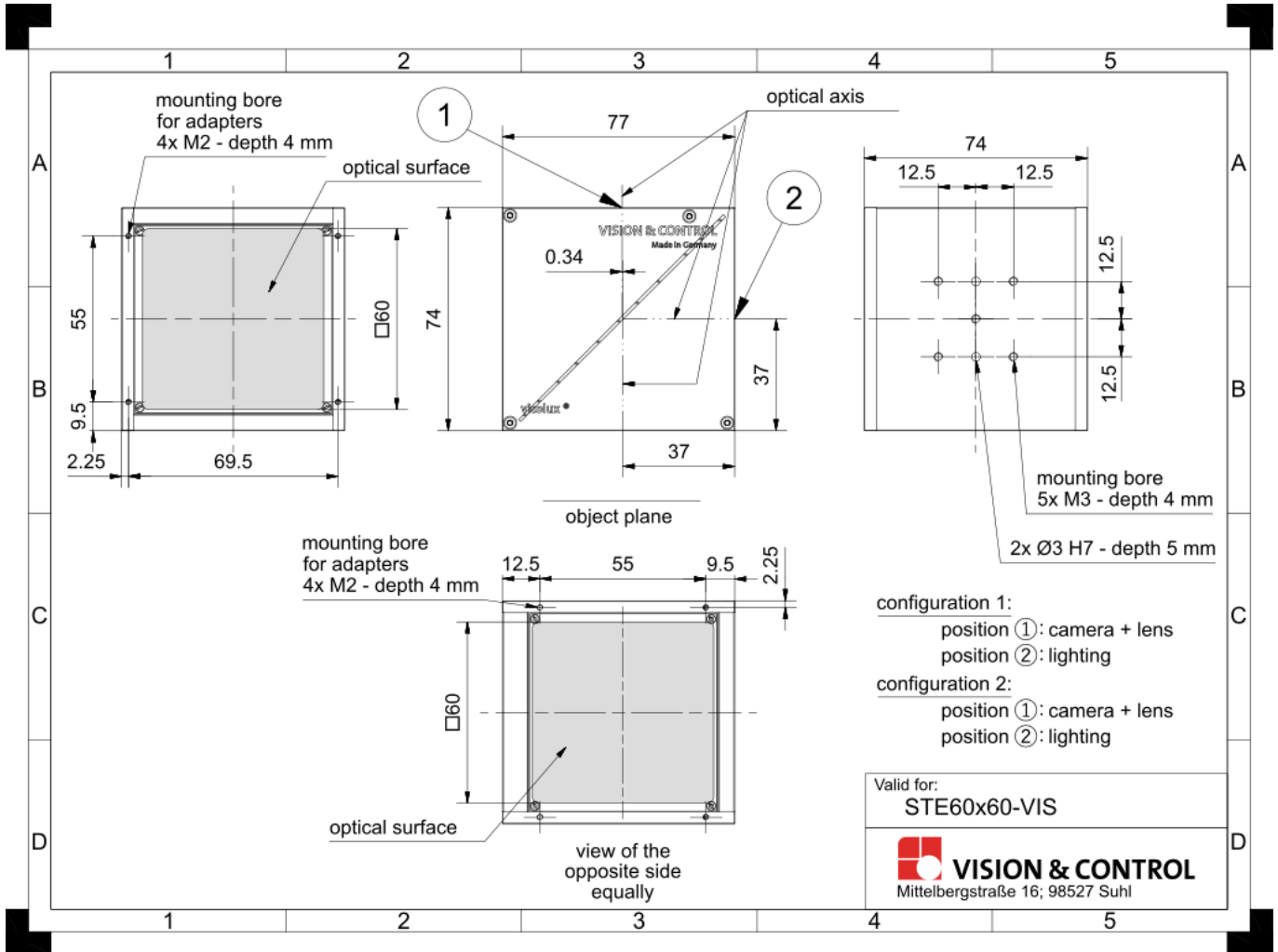
Technical data

Housing material	Aluminium, black anodised
Optical material	Splitter: glass Cover plates: PMMA
Spectral range	450 nm - 700 nm
Reflection/Transmission Ratio	50% R / 50% T \pm 5%
Displacement of the optical axis	0.334
Free field of view	60 mm x 60 mm
Dimensions	77 mm x 74 mm x 74 mm
Weight	290 g
Degree of protection	IP50

Accessories for Coaxial Lights - STE60x60-VIS

Order number	Title	Description
Beam splitter STE60x60		
1-32-350	Adapter STE60x60 - SFD, D-CRL	Attachment of the STE60x60 to SFD42/12 and to D-CRL-84x24
1-20-031	Adapter STE60x60 - DL60x60	Attachment of the STE60x60 to the DL60x60
1-20-022	Adapter STE60x60 - TZO56	Attachment of the STE60x60 to telecentric lenses and lightings with $d = 56\text{mm}$
1-20-021	Adapter STE60x60 - TZO71	Attachment of the STE60x60 to telecentric lenses and lightings with $d = 71\text{mm}$
1-20-023	Adapter STE60x60 - TZO106	Attachment of the STE60x60 to telecentric lenses and lightings with $d = 106\text{mm}$

Drawings



Dimensional drawing in mm