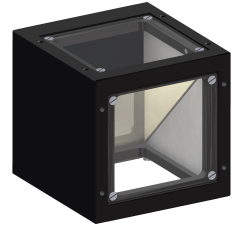


Beam Splitter Unit - STE30x30-VIS

Short description: Beam splitter unit for coaxial light system,
optimized for 450-700 nm

Order number: 1-18-050



Characteristics

- Beam splitter unit for setting up a coaxial light
 - modular design - type and position of lens and lighting are freely selectable
 - in combination with the DL30x30 lighting results in a very homogeneous light source
 - various adapters for lighting and lenses allow individual scenarios
 - suitable for industry thanks to robust, anodized aluminium housing with high dimensional stability
-

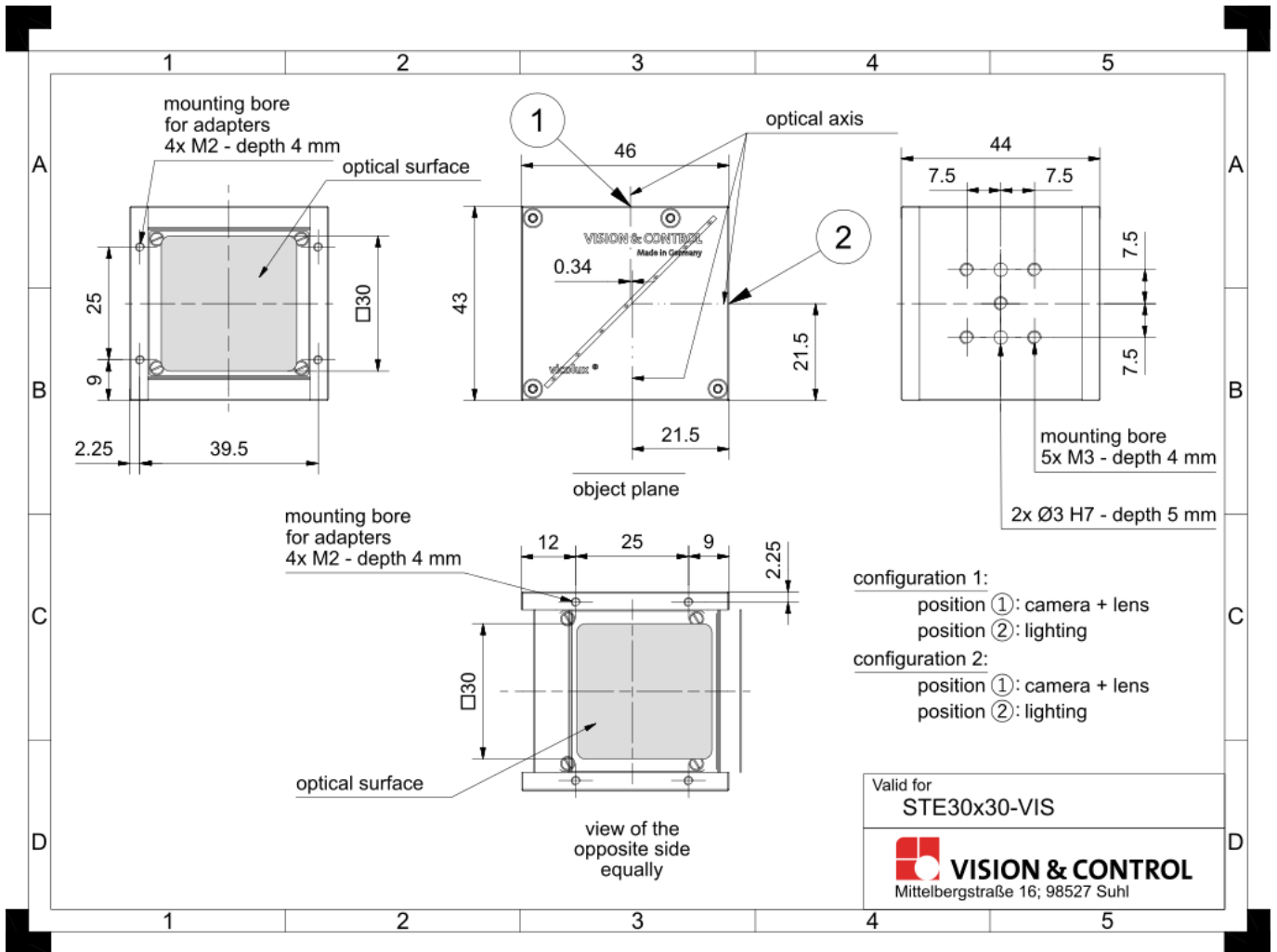
Technical data

Housing material	Aluminium, black anodised
Optical material	Splitter: glass Cover plates: PMMA
Spectral range	450 nm - 700 nm
Reflection/Transmission Ratio	50% R / 50% T \pm 5%
Displacement of the optical axis	0.334
Free field of view	30 mm x 30 mm
Dimensions	46 mm x 44 mm x 43 mm
Weight	100 g
Degree of protection	IP50

Accessories for Coaxial Lights - STE30x30-VIS

Order number	Title	Description
Beam splitter STE30x30		
1-18-041	Adapter STE30x30 - RK1220	Attachment of the STE30x30 to the RK1220
1-32-250	Adapter STE30x30 - SFD, D-CRL	Attachment of the STE30x30 to SFD30/9 and D-CRL-60x18 and also SFD42/12 and D-CRL-84x24
1-18-031	Adapter STE30x30 - DL30x30	Attachment of the STE30x30 to the DL30x30
1-18-021	Adapter STE30x30 - TZO25	Attachment of the STE30x30 to telecentric lenses and lightings with d = 25 mm
1-18-026	Adapter STE30x30 - TZO28	Attachment of the STE30x30 to telecentric lenses and lightings with d = 28 mm
1-18-022	Adapter STE30x30 - TZO32	Attachment of the STE30x30 to telecentric lenses and lightings with d = 32 mm
1-18-023	Adapter STE30x30 - TZO34	Attachment of the STE30x30 to telecentric lenses and lightings with d = 34 mm
1-18-024	Adapter STE30x30 - TZO35,5	Attachment of the STE30x30 to telecentric lenses and lightings with d = 35.5 mm
1-18-027	Adapter STE30x30 - TZO38	Attachment of the STE30x30 to telecentric lenses and lightings with d = 38 mm
1-18-025	Adapter STE30x30 - TZO42	Attachment of the STE30x30 to telecentric lenses and lightings with d = 42 mm

Drawings



Dimensional drawing in mm