
Adapter for Beam Splitter Unit - Adapter STE30x30 - TZO28

Short description: Attachment of the STE30x30 to telecentric lenses and lightings with $d = 28$ mm

Order number: 1-18-026



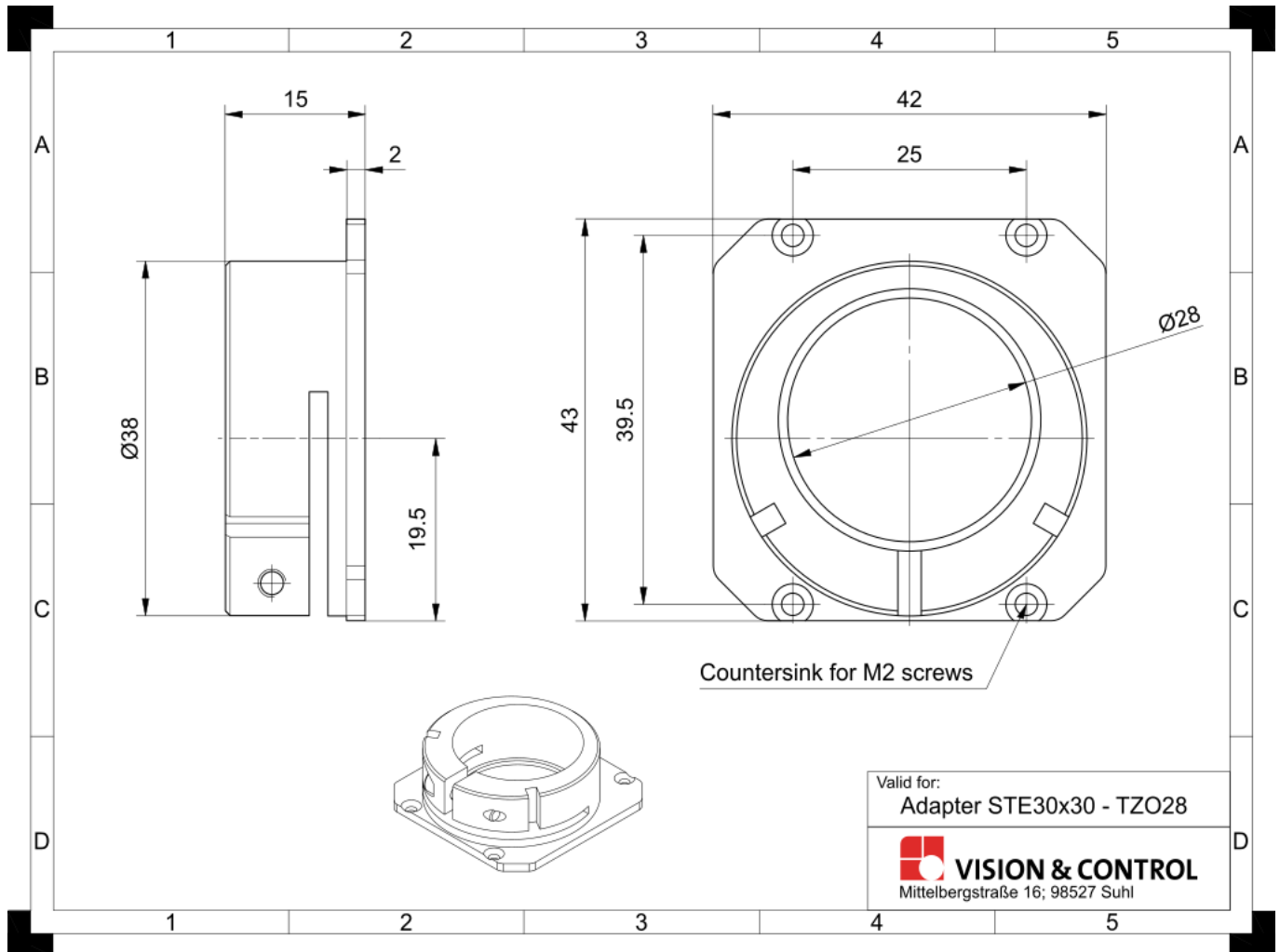
Characteristics

- Adapter for mounting a telecentric lens with a 28 mm front diameter on the STE30x30
 - suitable fastening material (screws and grub screws) is included in the scope of delivery
-

Technical data

Material	Aluminium, black anodised
Clamping diameter	28 mm
Weight	20 g
Adapted to:	
Telecentric optic	TO18 series

Drawings



Dimensional drawing in mm