

---

## vicolux® Area Light - FDL60x90-R625/C

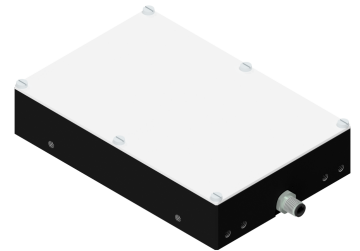
---

**Short description:** area light, red, diffuse, LF-size: 55x85 mm, M5, continuous and pulse mode

**Order number:** 1-11-061

**EAN:** 4251692654002

**Actual Notice:** **Not for new developments**  
Please use the products of the A-DIF or FDLRL series for new developments.



---

### Characteristics

- flat LED area light with diffuse illumination
  - homogeneous illumination
  - lighting controller integrated in casing
  - continuous or flash operation
  - brightness and Flash duration pre-set
  - connection: M5 plug on the casing
  - metal casing, optical material: PMMA
  - multiple mounting options
-

---

## Technical data

Light-emitting surface	55 mm x 85 mm
Light design	Diffus
Light colour (typ.)	Red, 625 nm
Operating mode	Schaltbarer Dauerbetrieb (50 ms - ∞) Blitzbetrieb (Blitzdauer 100 µs)
<b>Continuous operation</b>	
• Operation voltage	10 ... 30 VDC
• Power consumption	max. 10 W
• Radiance	30 W/(m <sup>2</sup> sr)
• luminance	3,884 cd/m <sup>2</sup>
<b>Flash mode</b>	
• Operation voltage	18 ... 30 VDC
• Power consumption	max. 10 W
• Radiance	275 W/(m <sup>2</sup> sr)
• luminance	36,122 cd/m <sup>2</sup>
Housing material	Aluminium, black anodised
Optical material	PMMA
Weight	240 g
Degree of protection	IP67
Safety class	III, Schutzkleinspannung (SELV)
Risk group (DIN EN 62471)	Freie Gruppe
Ambient temperature	- 10 °C ... + 45 °C

## Notices

**For further information, please contact your personal contact in our sales department.**

---

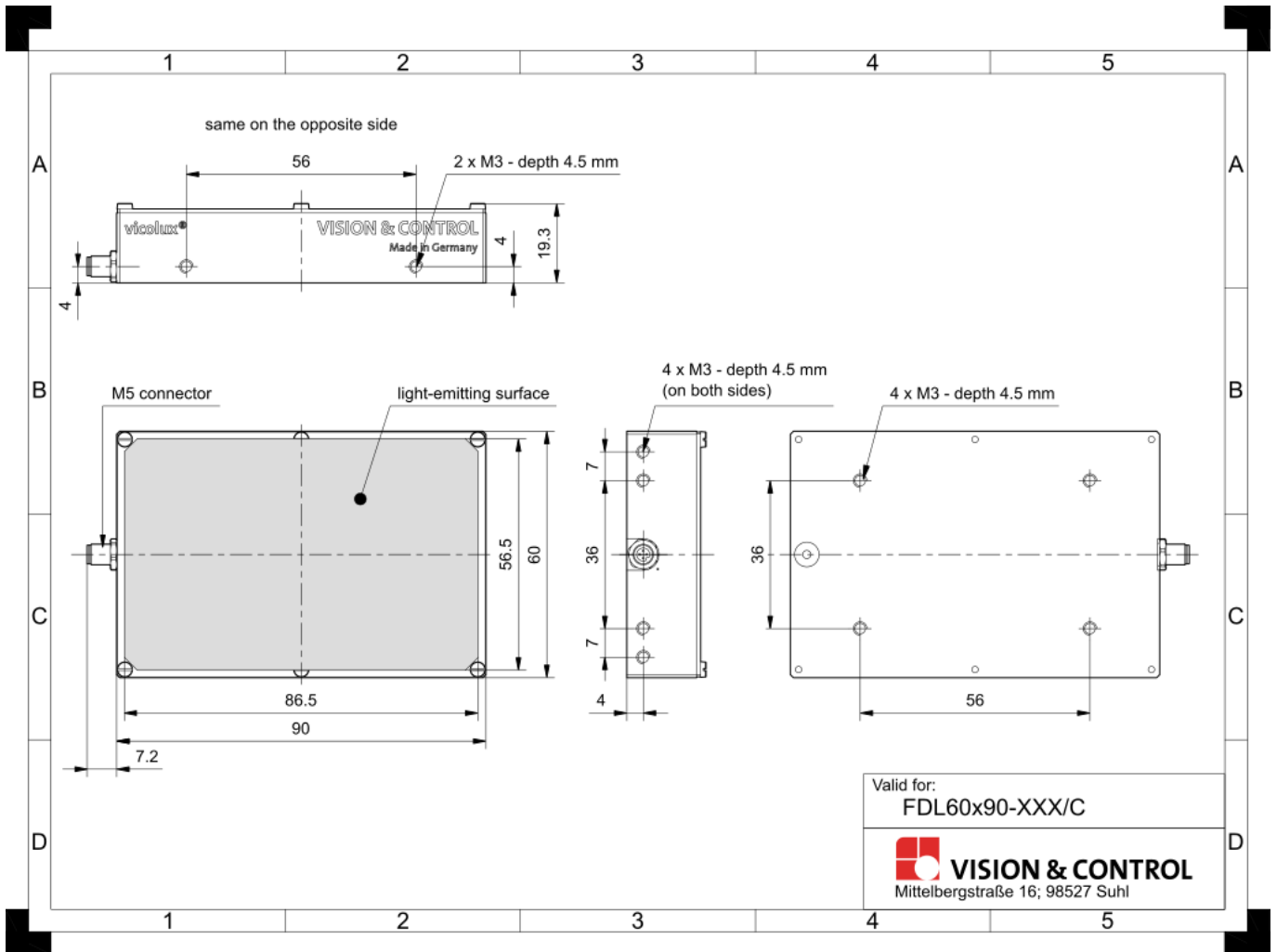
---

**Accessories for Area and Bar lights - FDL60x90-R625/C**

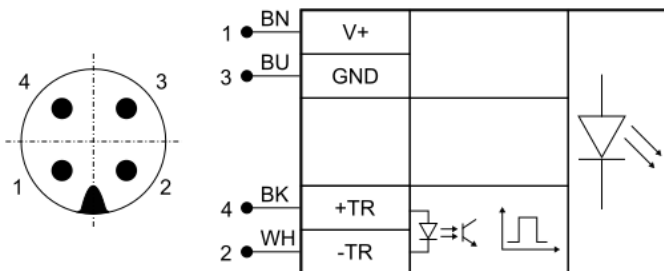
<b>Order number</b>	<b>Title</b>	<b>Description</b>
<b><i>Connection cable M5-4pin</i></b>		
1-11-117	Cable-M5-4p-1A-straight-2m	4x0.14mm <sup>2</sup> , 1A, 60V, PUR, IP67, M5-4pin straight socket to free cable end
1-11-116	Cable-M5-4p-1A-straight-5m	4x0.14mm <sup>2</sup> , 1A, 60V, PUR, IP67, M5-4pin straight socket to free cable end
1-11-105	Cable-M5-4p-1A-angled-2m	4x0.14mm <sup>2</sup> , 1A, 60V, PUR, IP67, M5-4pin angled socket to free cable end
1-11-104	Cable-M5-4p-1A-angled-5m	4x0.14mm <sup>2</sup> , 1A, 60V, PUR, IP67, M5-4pin angled socket to free cable end

---

## Drawings



Dimensional drawing in mm



Pin	Core colour	Signal	Description
1	BN (brown)	V+	Operating voltage
2	WH (white)	- TR	Trigger input "-"
3	BU (blue)	GND	Ground
4	BK (black)	+TR	Trigger input "+"

Pin assignment: M5 connector