

---

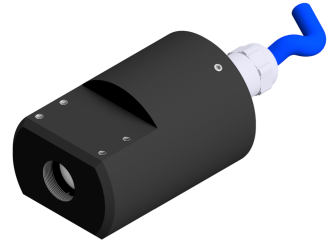
## Telecentric Light - TZB10-B470

---

**Short description:** telecentric light, blue, If diameter: 10 mm,  
static, cable open-ended

**Order number:** 1-10-101

**EAN:** 4251692646021



---

### Characteristics

- telecentric LED lighting - parallel (collimated) beam path
  - ideal as backlight in combination with telecentric lenses
  - for the targeted highlighting of edges and surface structures as well as for the detection of inclusions and defects in transparent materials
  - lighting controller integrated in the housing - brightness adjustable
  - connection: cable with M8 connector
  - diverse attachment options and extensive accessories
-

---

## Technical data

Light-emitting surface	Diameter: 10 mm
Light design	Telecentric
Light colour (typ.)	Blue, 470 nm
Luminous flux (typ.)	0.66 mlm
Operating mode	Switchable continuous operation
Special feature	Brightness setting manually on the potentiometer
Operation voltage	10 ... 30 VDC
Power consumption	max. 3.6 W (150 mA at 24 VDC)
Housing material	Aluminium, black anodised
Optical material	Glass
Filter thread	M13.5 x 0.5 - depth 3 mm
Weight	150 g
Degree of protection	IP50
Safety class	Class III, safety extra low voltage (SELV)
Risk group (DIN EN 62471)	Risk group 0 (exempt group)
Ambient temperature	0 °C ... 45 °C
<b>Cable</b>	
Cable length	1,500 mm
Cable diameter	6.5 mm
Cable structure	4 x 0.25 mm <sup>2</sup> and 3 x 0.5 mm <sup>2</sup>
Drag chain suitable	Yes

---

---

## Accessories for Telecentric lights - TZB10-B470

Order number	Title	Description
--------------	-------	-------------

---

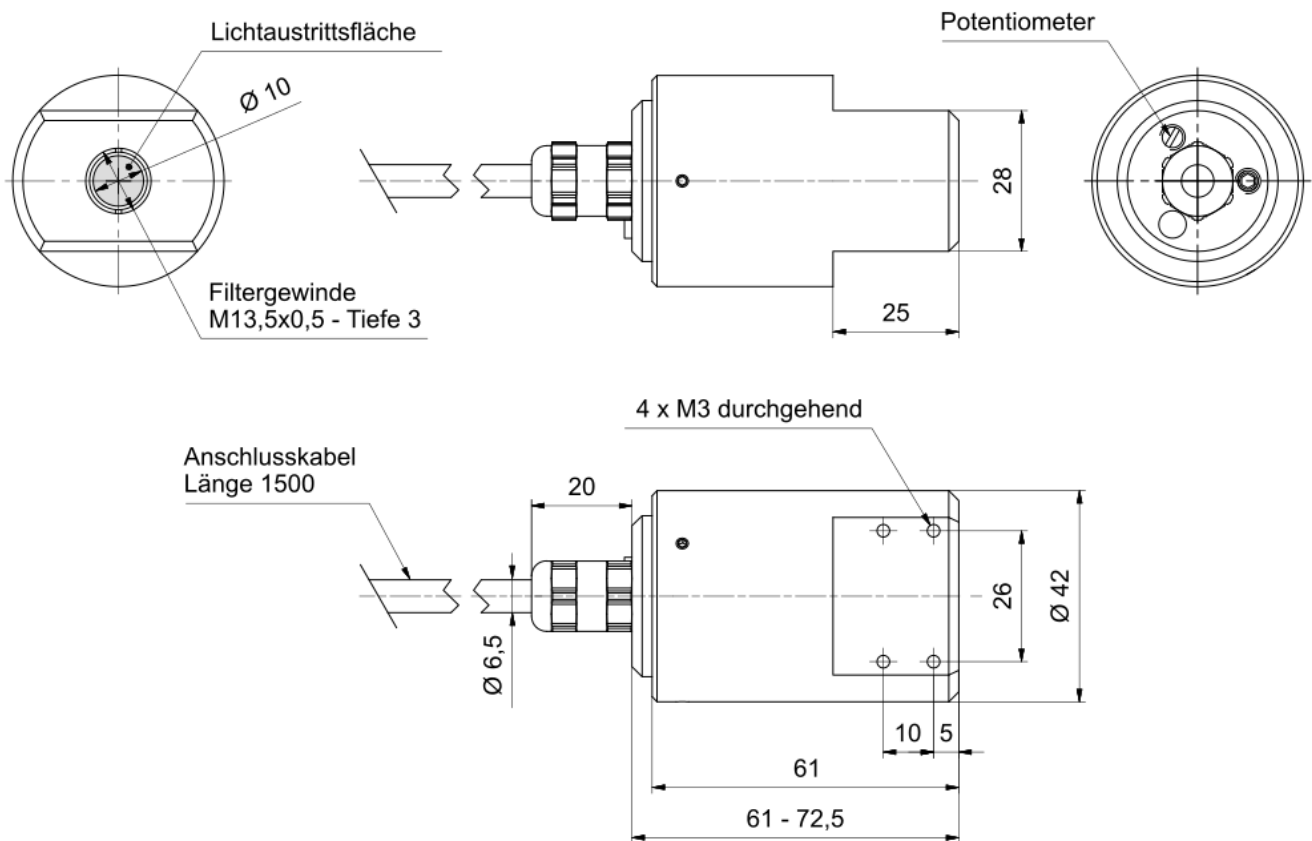
### *Optical accessories*

---

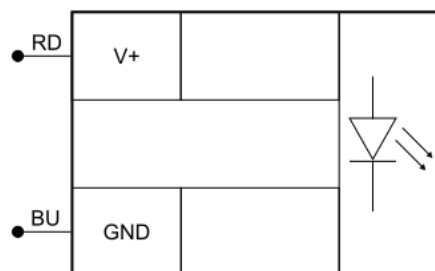
1-10-078	TZB10 aperture kit	3 screw-in apertures with a diameter of 2.5 mm, 3.3 mm and 5.4 mm
----------	--------------------	---

---

## Drawings



Dimensional drawing in mm



Core colour	Signal	Description
RD (red)	V+	Operating voltage
BU (blue)	GND	Ground

Pin assignment: cable open, 2-core